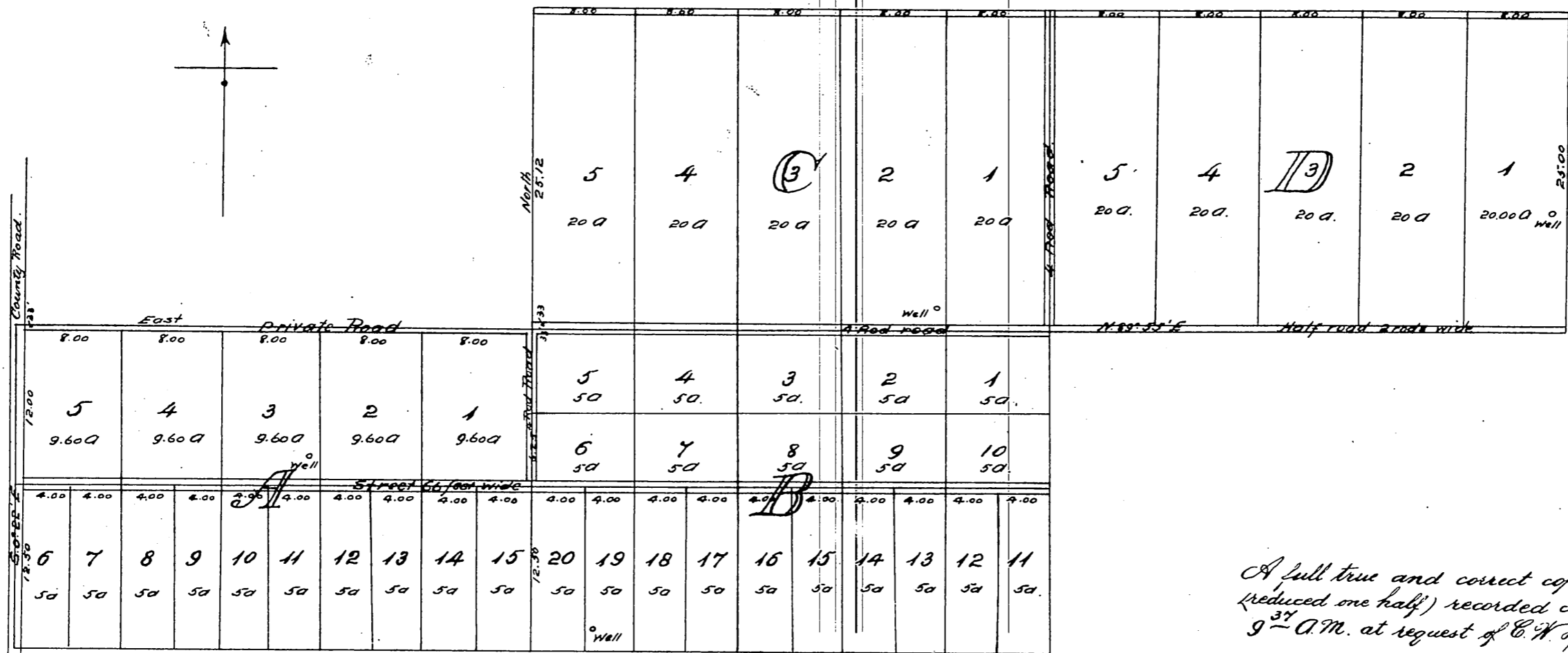


Plat
 Showing subdivisions of a portion of the
BERRY TRACT
 in the
Rancho Santiago de Santa Ana.
 Surveyed by *H. C. Kellogg* April 1st 1886.

Scale 5 chains to the inch.
 (Reduced one half).

Note. Acreage includes to center of Street.



*A full true and correct copy of the original
 (reduced one half) recorded April 10th 1886 at
 9³⁰ A.M. at request of C. W. Humphreys.*

*Frank A. Gibson, County Recorder,
 by W. B. Prichard Deputy.*