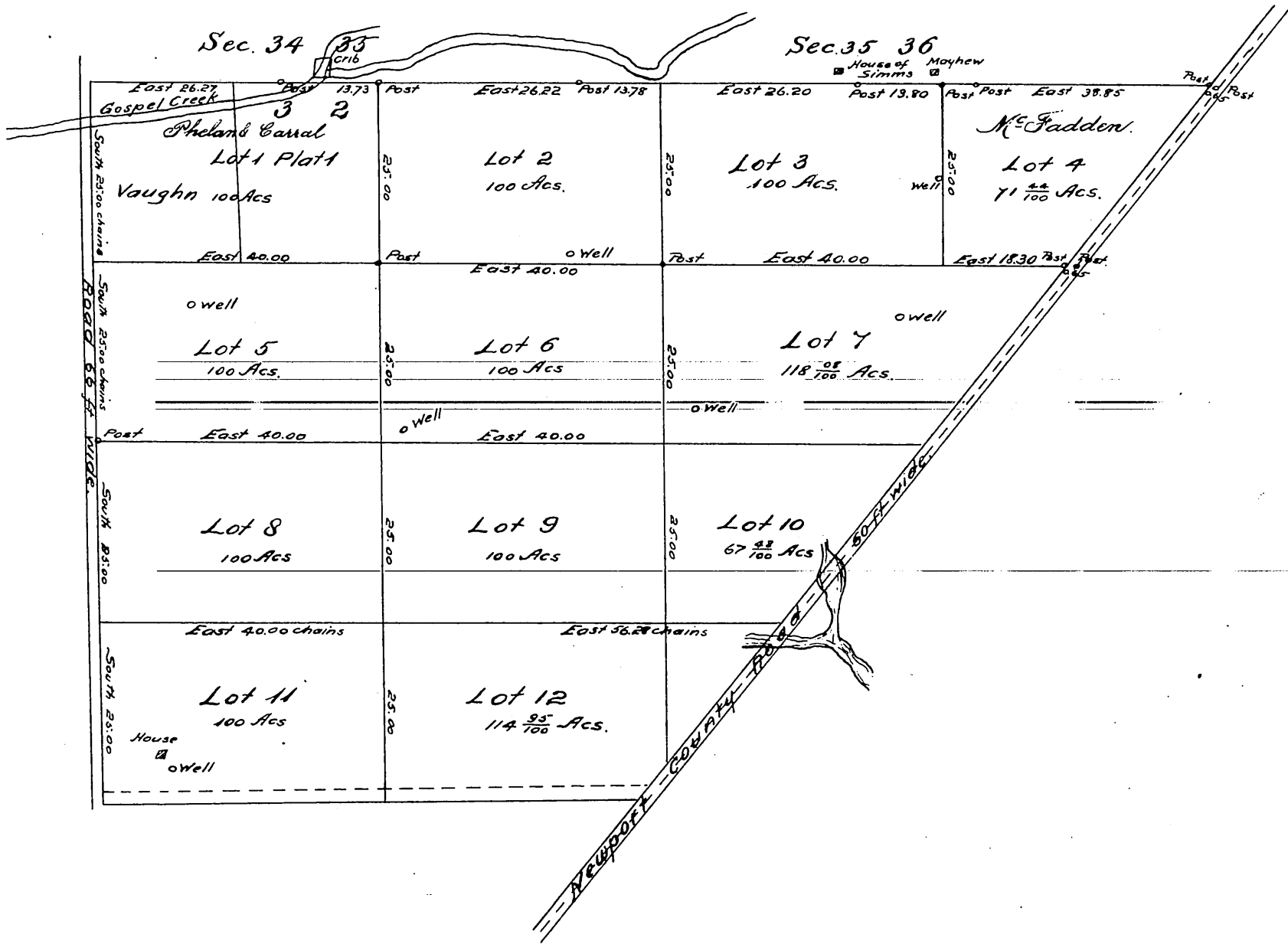


Plan
of
Berry Rancho
Los Angeles County, California.
Surveyed March 1872

by
Frank Lecouvreur, County Surveyor.

Scale 20 chains pr inch.
Variation 14°30' East.

{Reduced one half}



A full, true and correct copy of the original (reduced one half) recorded April 10th 1886
at 9th A.M. at request of C. W. Humphreys.

Frank N. Gibson, County Recorder.
by Arthur Bray Deputy.