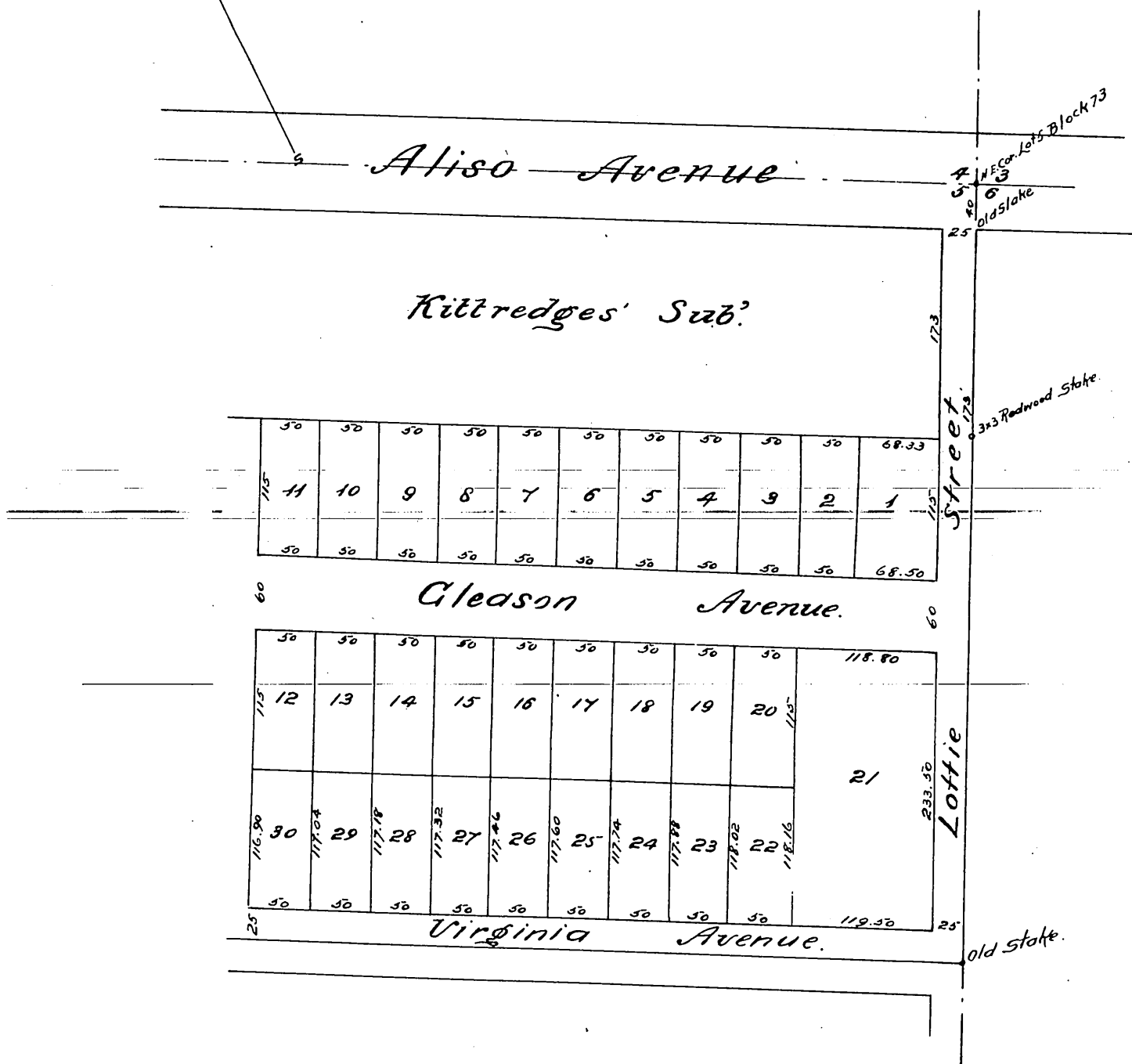
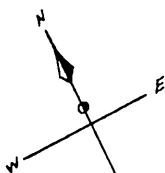


Map
 of
Mrs Gleason's Subdivision
 of a part of
Lot 5, Block 73 of Hancock's Survey.
 of
City Donation lots of Los Angeles City, Cal.
 made in March 1886 by J.A. Bernal.
 Scale 60 feet to an inch.

(Reduced one half)



A full true and correct copy of the original (reduced one half) recorded
April 10th 1886 at 8th A.M. at request of Mrs. Nellie H. Gleason.

Frank A. Gibson, County Recorder.
Deputy.