

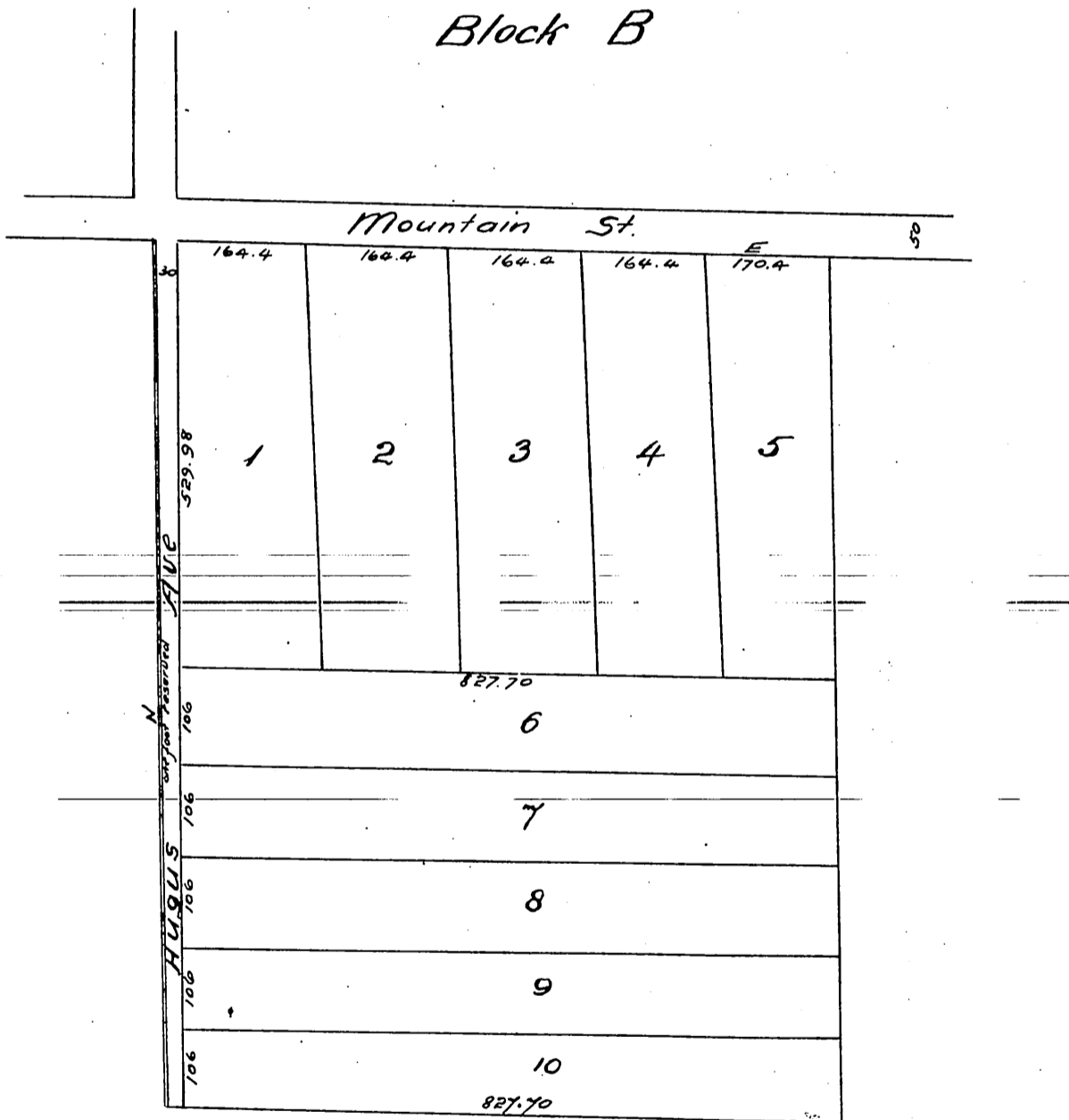
*Plat*  
of  
*J. D. Yocum's Subdivision*  
of a part of the  
*Grogan Tract,*

*as described in deed recorded Bk. p. in Recorder's Office, Los Angeles Co. Cal.*

*Williell Thompson, Sur.*

*Scale 100ft = 1 in.*

*<Reduced one half>*



*A full true and correct copy of the original (reduced one half)  
recorded May 4, 1886 at 11<sup>52</sup> A.M. at request of J. D. Yocum.*

*Frank A. Gilson County Recorder  
by Arthur Bray, Deputy.*

Plat  
of  
J. D. Yocum's Subdivision  
of a part of the  
Grogan Tract

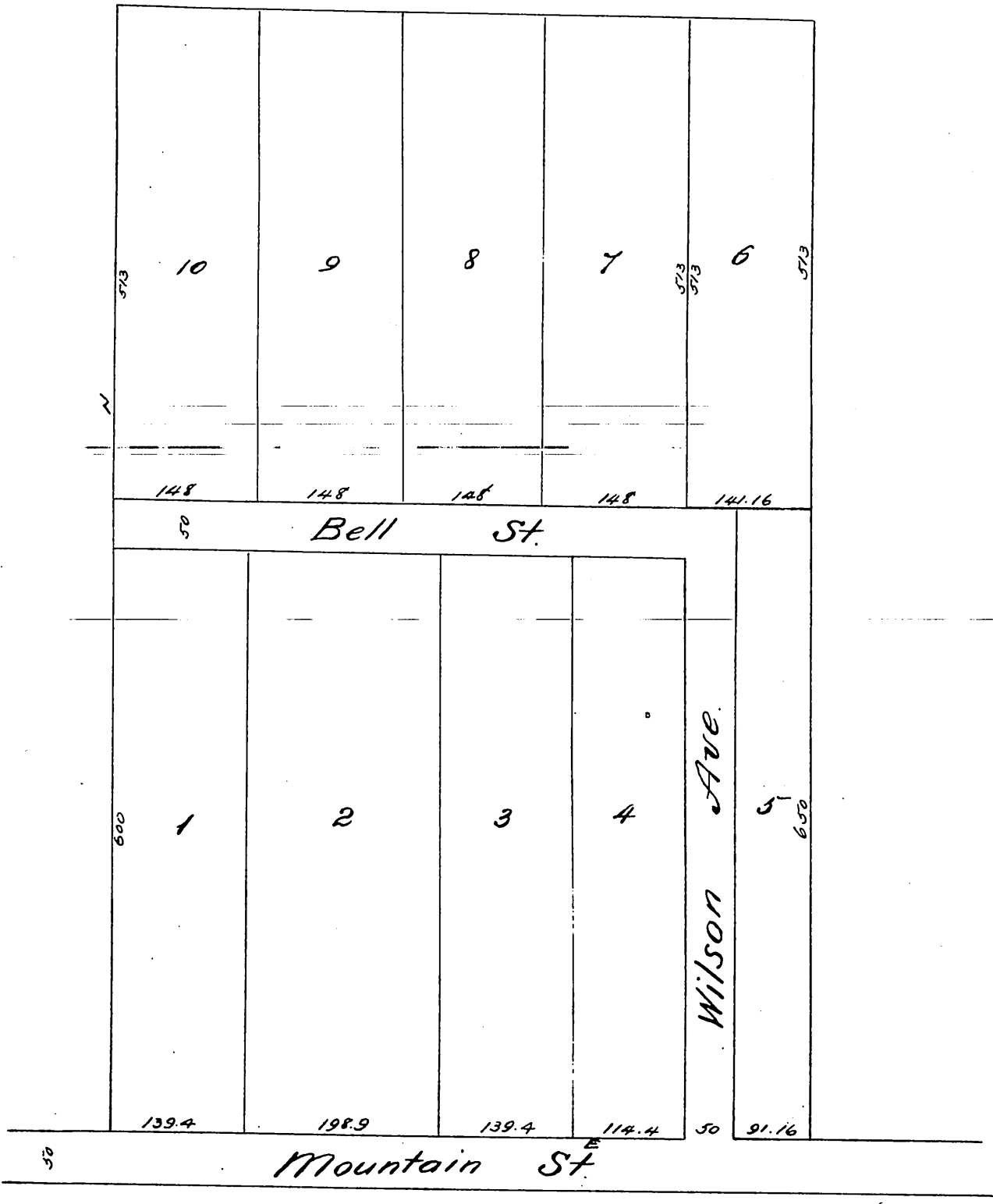
as described in deed recorded May 16. 1882 Bk 89, p. 292 in Recorder's Office Los Angeles Co. Cal.

Williell Thomson. Sur.

Scale 100ft to the inch.

(Reduced to 150ft to in.)

Block A



A full true and correct copy of the original (reduced to scale of 150 feet to one inch) recorded May 4. 1886 at 11<sup>30</sup> A.M. at request of J. D. Yocum.

Frank A. Gibson County Recorder  
by Arthur Bray Deputy.