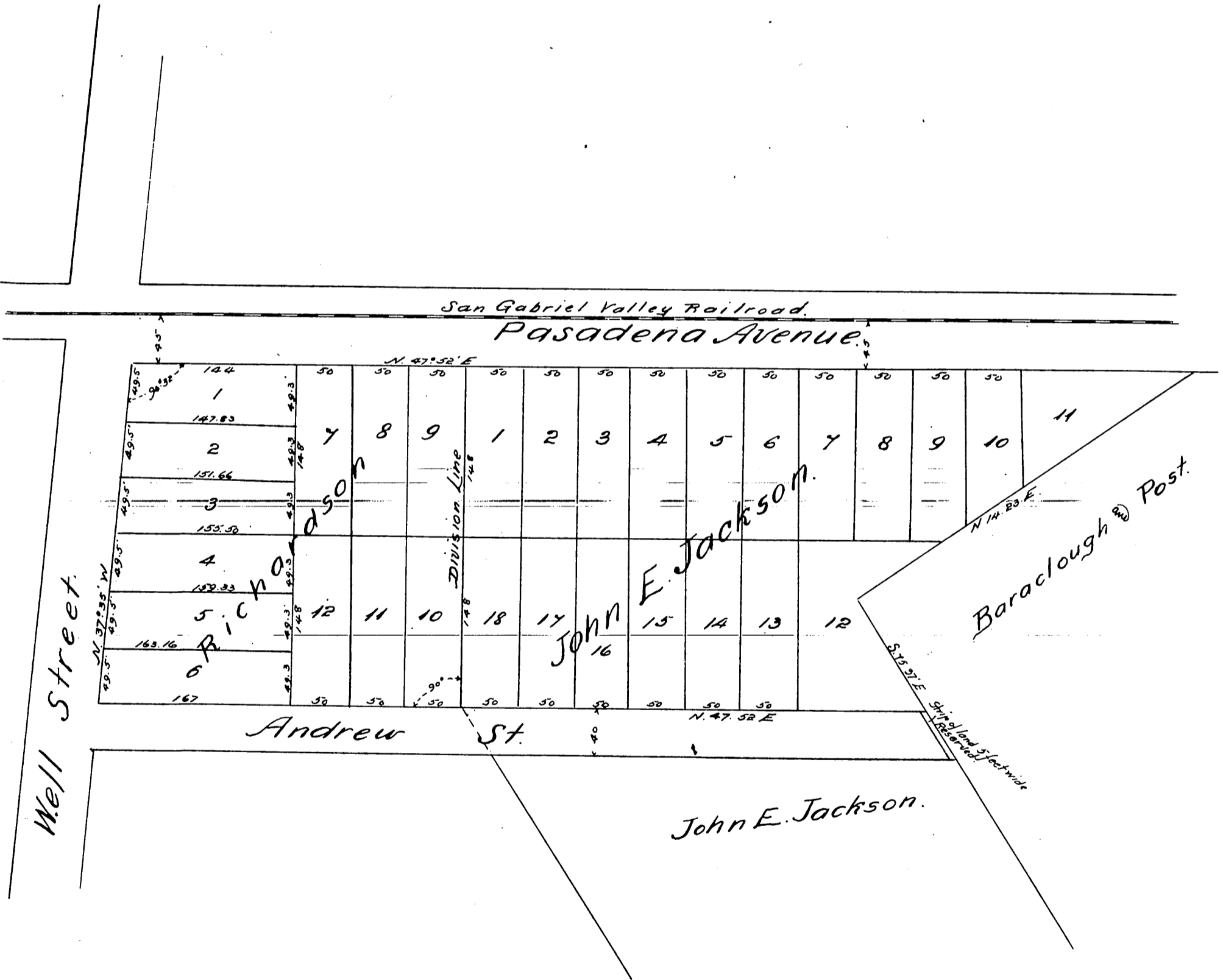




Map  
 &  
 A Tract in East Los Angeles  
 being  
 A Subdivision of Griffin's Arroyo Lots 2,3,4,  
 owned by  
 Richardson & Jackson  
 as shown on map.

True courses Var. 14° 45' E  
 Scale 100' to one inch.



A full true and correct copy of the original recorded  
 May 7<sup>th</sup> 1886 at 10<sup>th</sup> 0<sup>th</sup> A.M. at request of W. J. Richardson.  
 Frank A. Gibson County Recorder.  
 by W. B. Prichard Deputy.