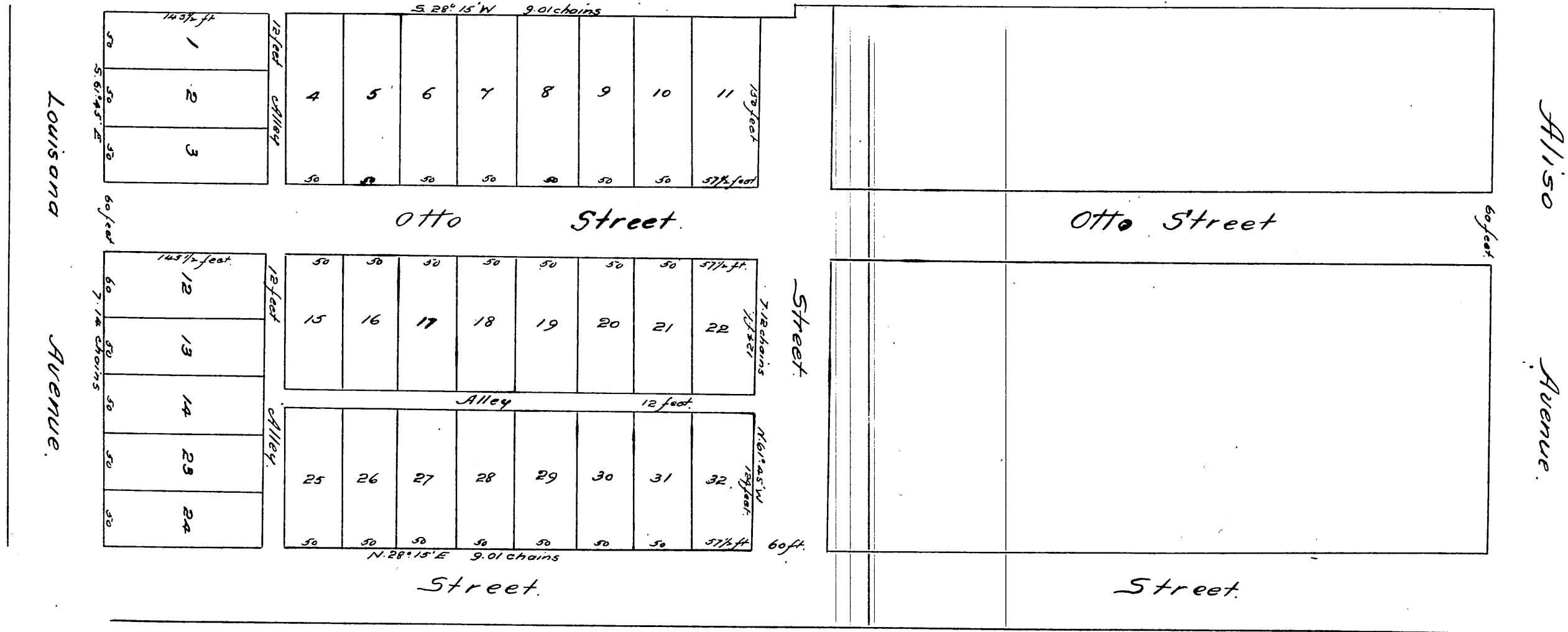
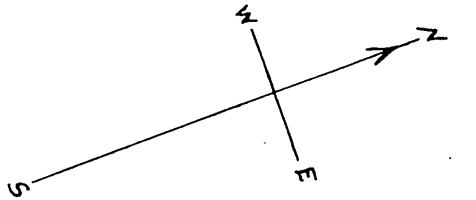


Map  
 of  
 Hellman & Stassforth's Subdivision  
 of Lot 5 of Workman & Hellman's Subdivision of Block 73, Hancock's Survey.  
 Los Angeles City, California.



A full true and correct copy of the original recorded May 8<sup>th</sup> 1886  
 at 11<sup>h</sup> A.M. at request of V. A. Stassforth & M. Baill.  
 Frank A. Gibson County Recorder.  
 by Arthur Bray Deputy.

