

Map of the

Alcantara Grove Tract

IN THE

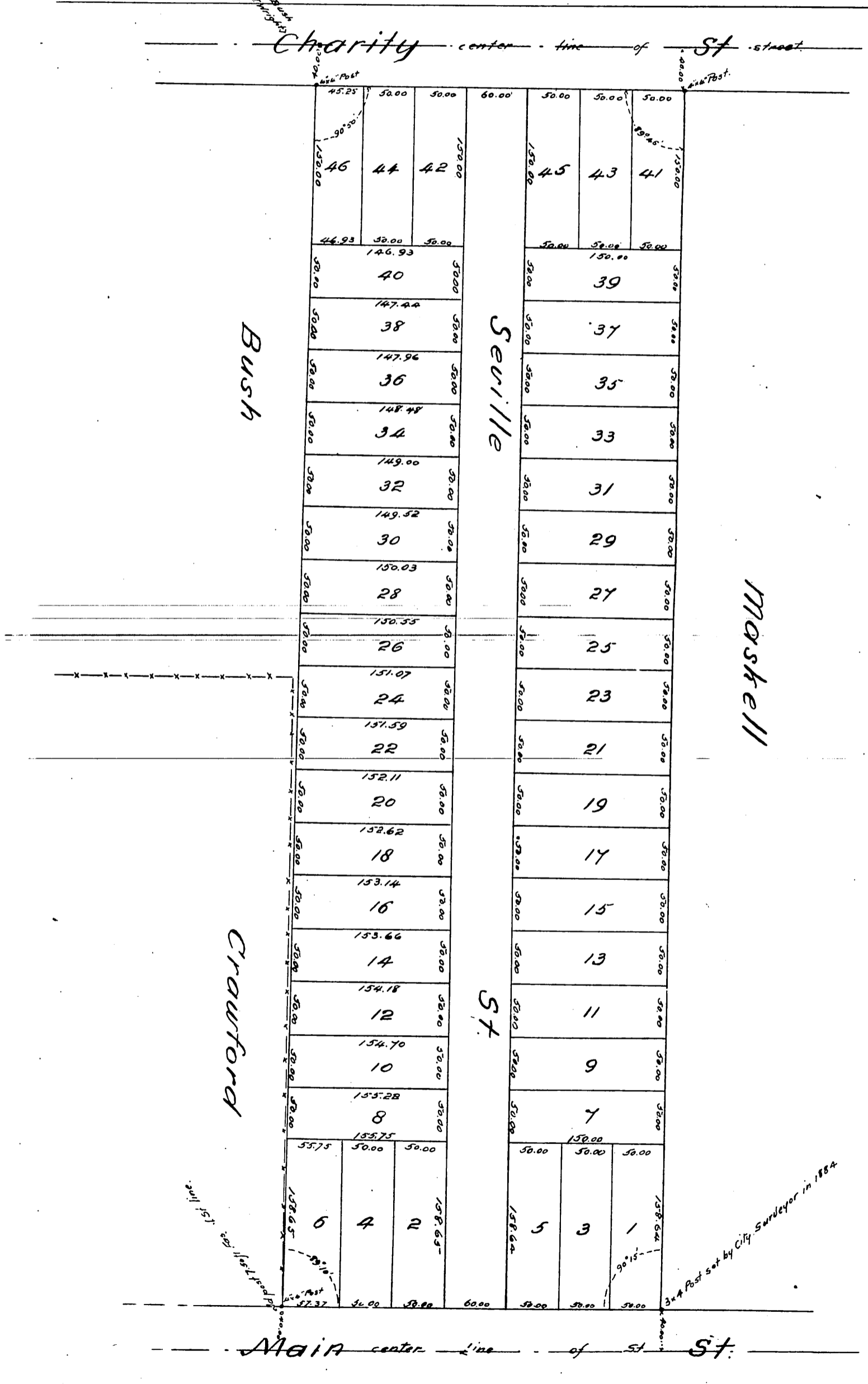
City of Los Angeles.

Subdivided at the request of F. H. Barclay.

by Geo. C. Knox, C.E. in Apr. 1886.

Scale 100 ft to one inch.

Post set on 1/2" block
Tract (only) E.M. 1884



A full, true and correct copy of the original recorded
 May 5th 1886 at 12^{PM} at request of F. H. Barclay.
 Frank A. Gibson, County Recorder.
 by N. S. Orville D. B. 111