

Hutchins Subdirision

OF

Four acres conveyed to him by deed recorded in Book of Deeds 85, page 83, Records Los Angeles County, Charles C. Lamb, County Recorder, by P. H. Dunsmoor, Dep.

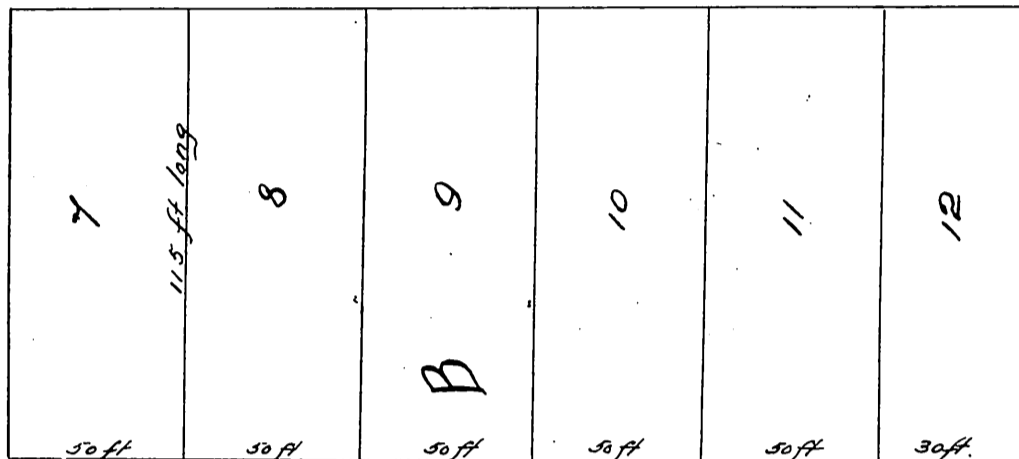
and known as

Hutchins Addition to Santa Ana.

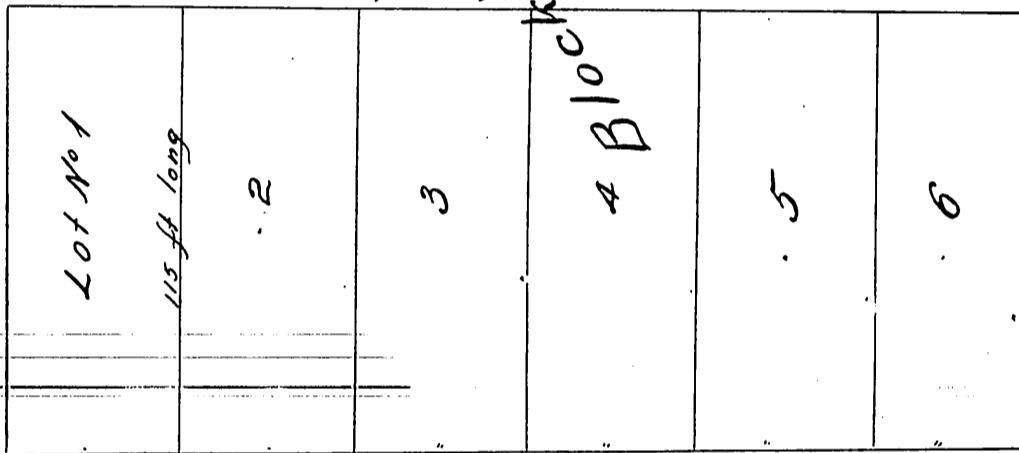
Made May 10th 1886

The land is subdivided into 2 Blocks by Second Street, A & B, & each Block into 12 Lots

First St.

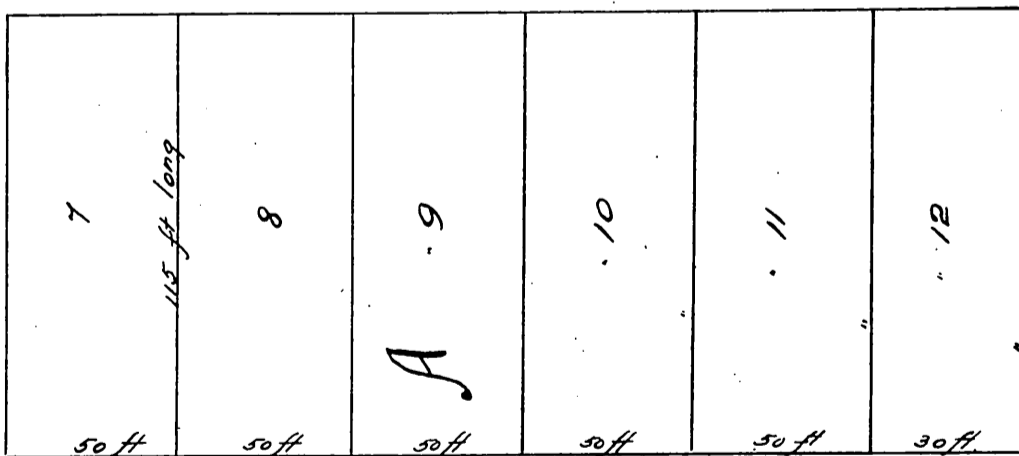


Alley 20 ft wide.

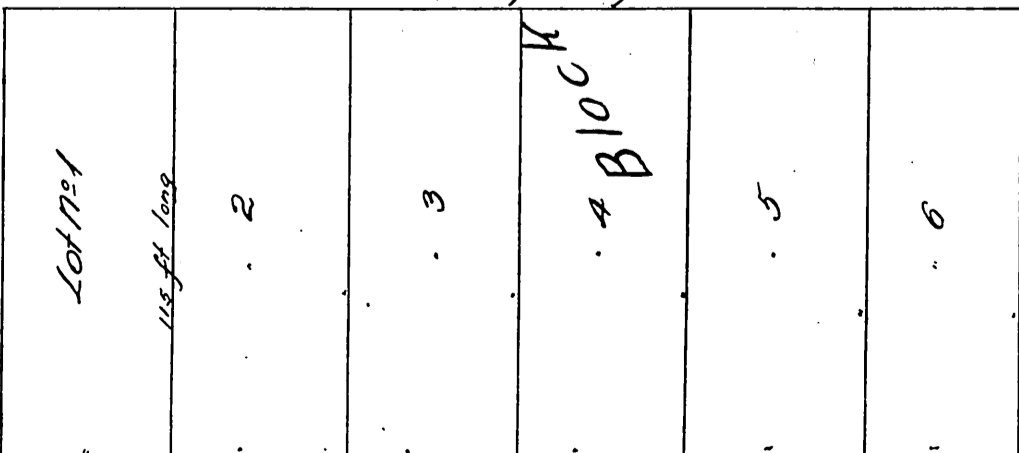


Olive St.

Second St. 60 ft wide.



Alley 20 ft wide.



Third St.

A full true and correct copy of the original recorded May 13th 1886 at 9th A.M. at request of J. W. Townes.

Frank A. Gibson, County Recorder.
by Arthur Bray, Deputy.

Salisbury Tract