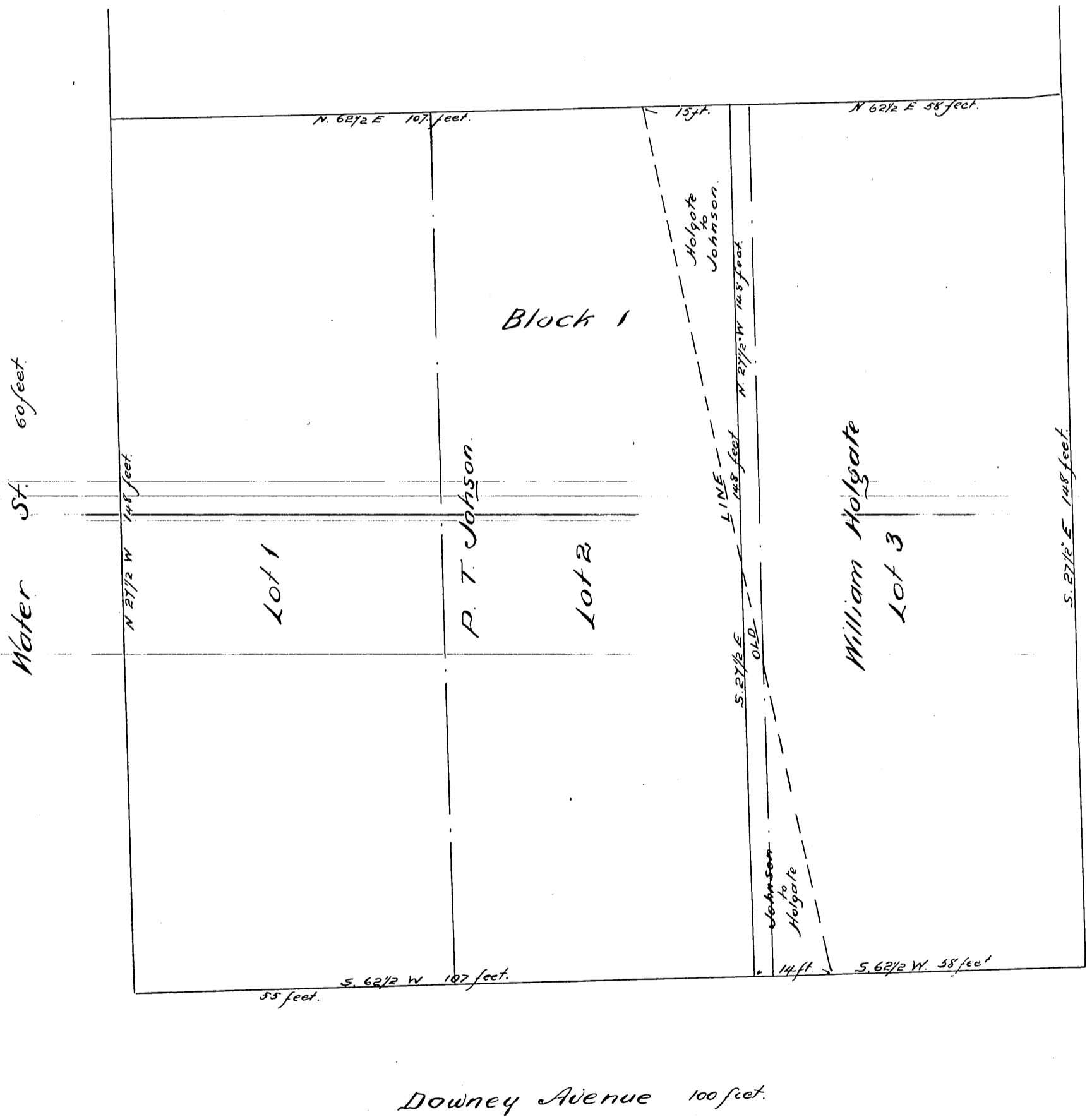


Map
of
Lots 1, 2 & 3 in Block 1
East Los Angeles.

as surveyed by John Goldsworthy May 23rd 86
True courses $\text{Via } 14\frac{1}{2}$ East. Scale 20 feet



at full, true and correct copy of the original
 recorded May 26 1886 at 54 min. past 2 P.M.
 at request of W^m Holgate
 Frank A. Gibson County Recorder.
 By Arthur Gray Deputy.