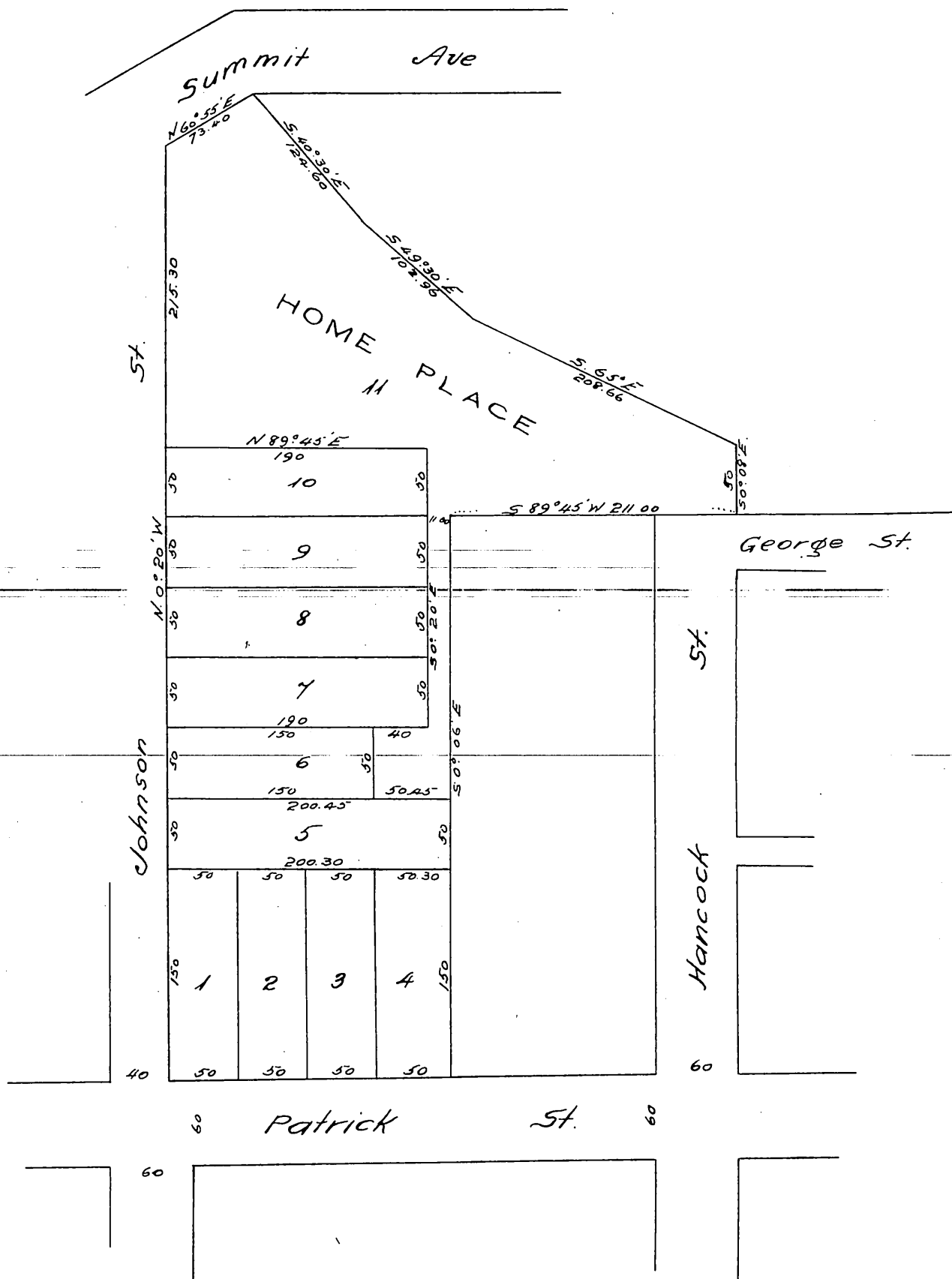


Map
of
W. A. TERRY'S SUBDIVISION
OF A PORTION OF THE
E. A. GIBBS TRACT
Surveyed June 1886 by E. T. Wright, Co. Sur.
Scale 100ft to one inch.



*A full, true and correct copy of the original
recorded June 9th 1886 at 3²⁹ P.M. at request
of W. A. Terry
Frank A. Gibson County Recorder.
By Arthur Bray Deputy.*