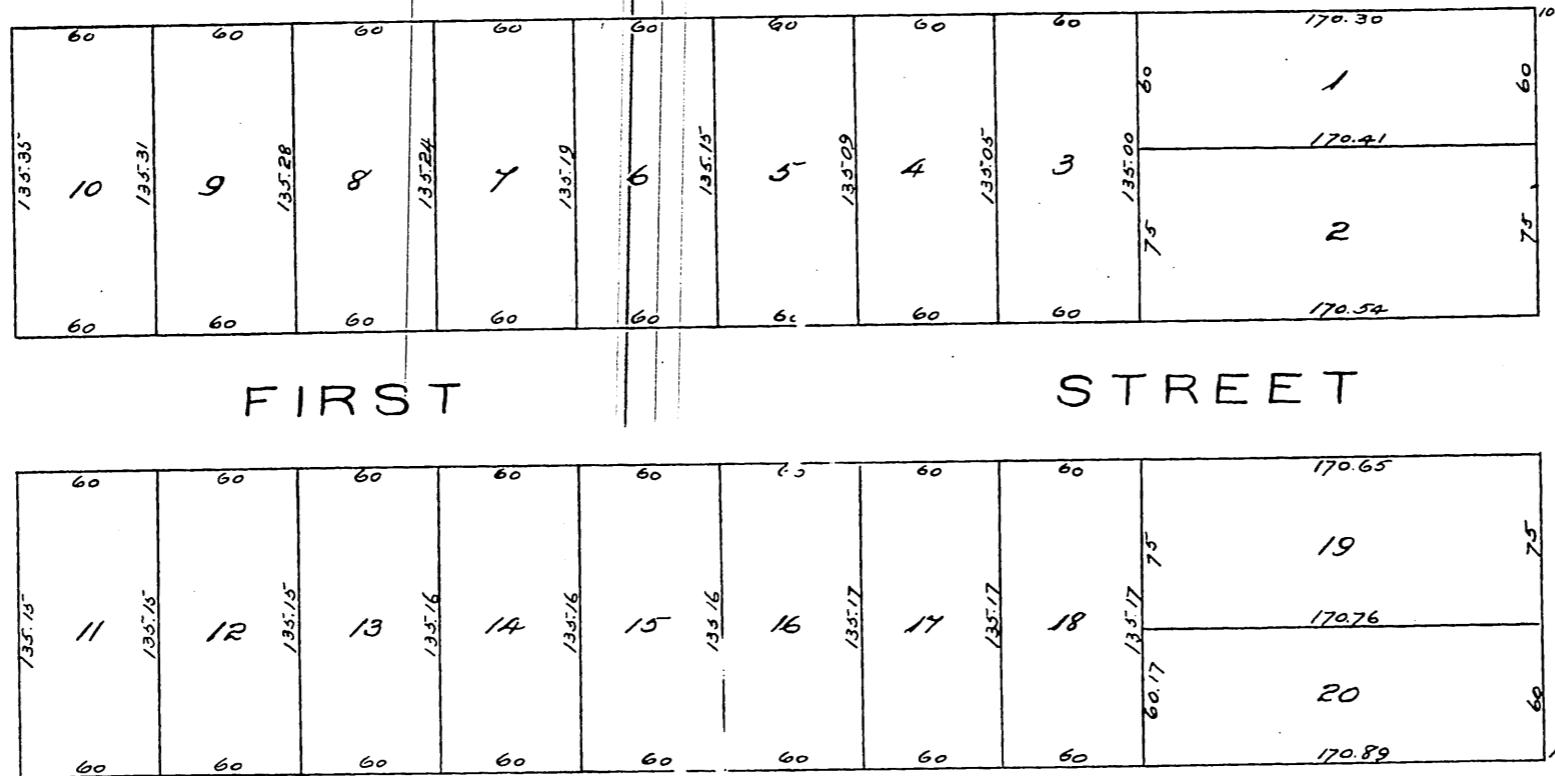


# Map of the GOODWIN-LUKENS TRACT

Subdivision of the North half of Lot 3, Block "K"  
San Pasqual Tract of Lake Vineyard  
Land and Water Association Lands.  
Pasadena, Cal.

Surveyed May 1886 by J. M. Willard.

Scale 50 ft to one inch.



A full, true and correct copy of the original  
reduced to the scale of 80 feet to one inch  
recorded June 10<sup>th</sup> 1886 at 10<sup>52</sup> A.M. at  
request of T. P. Lukens.

Frank A. Gibson County Recorder.  
By Arthur Bray, Deputy.