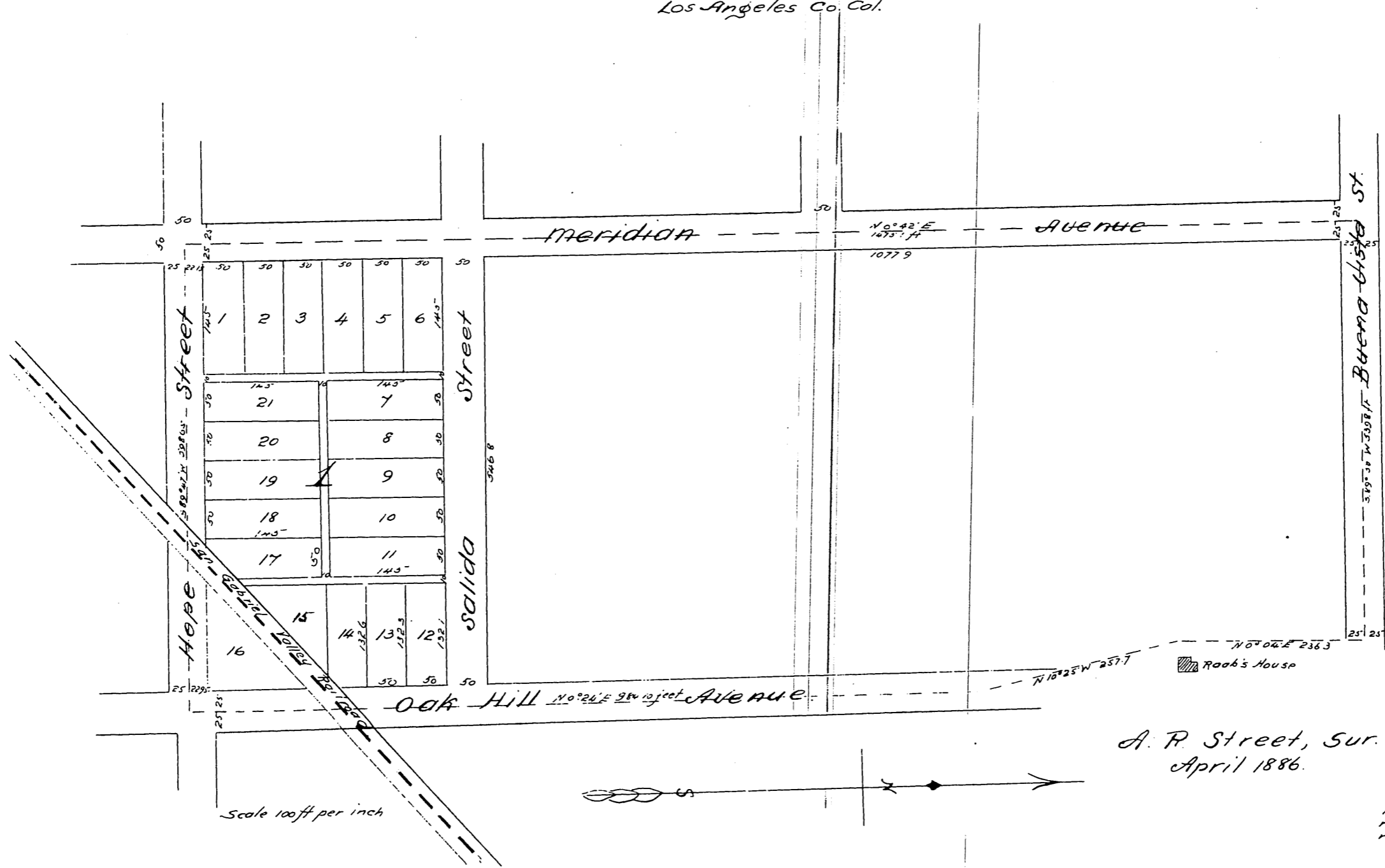


MAP
 OF
 Mortimer's Addition
 to
 South Pasadena
 Los Angeles Co. Cal.



A. R. Street, Sur.
 April 1886.

A full, true and correct copy of the Original
 reduced to scale of 150 feet to one inch
 recorded June 17th 1886 at 11th AM. at
 request of C. White Mortimer Trustee
 Frank C. Gilmore, County Recorder
 Deputy.

