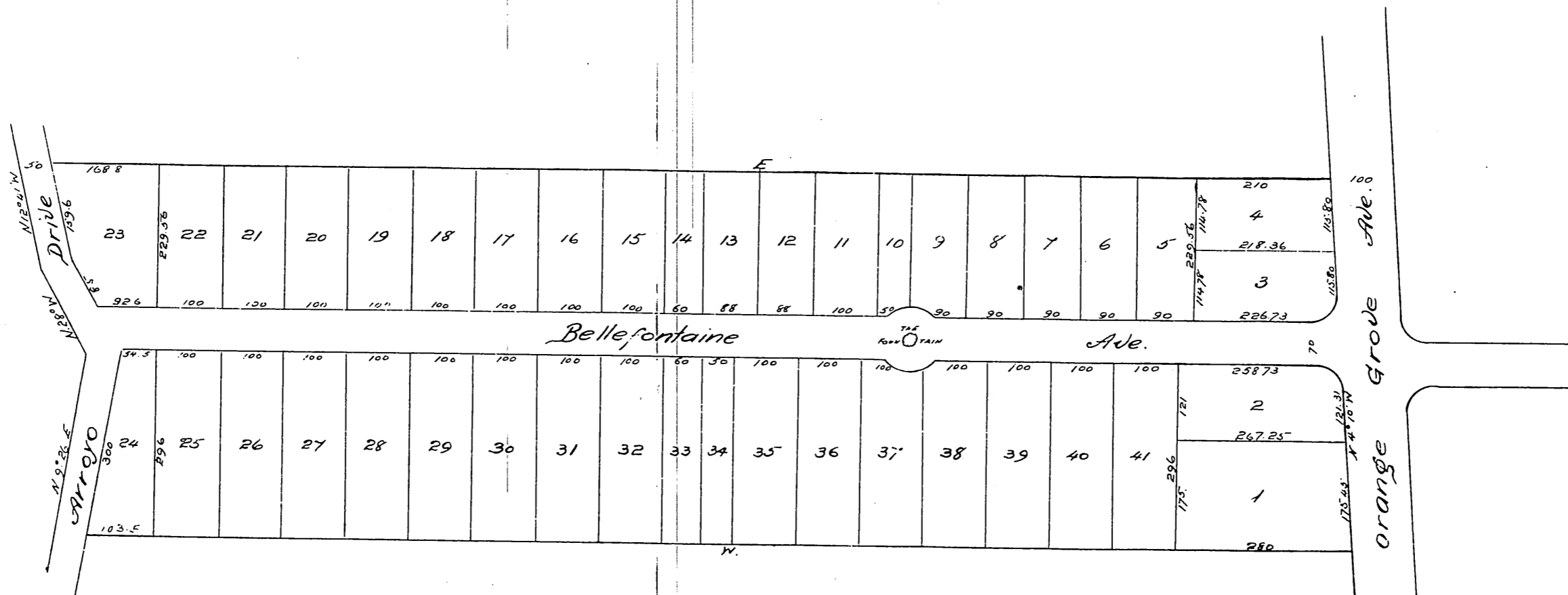


PLAT  
 of  
 Thomas & Wotkyns' Subdivision  
 of the  
 H. G. Bennett Tract  
 Pasadena California.

W Thomson Sur June 1886. Scale 100ft = 1 in.



A full, true and correct copy of the original  
 reduced to the scale of 200ft to one inch.  
 recorded June 18<sup>th</sup> 1886 at 10<sup>30</sup> A.M. at request  
 of Thomas & Wotkyns.  
 Frank A. Gibson County Recorder.

