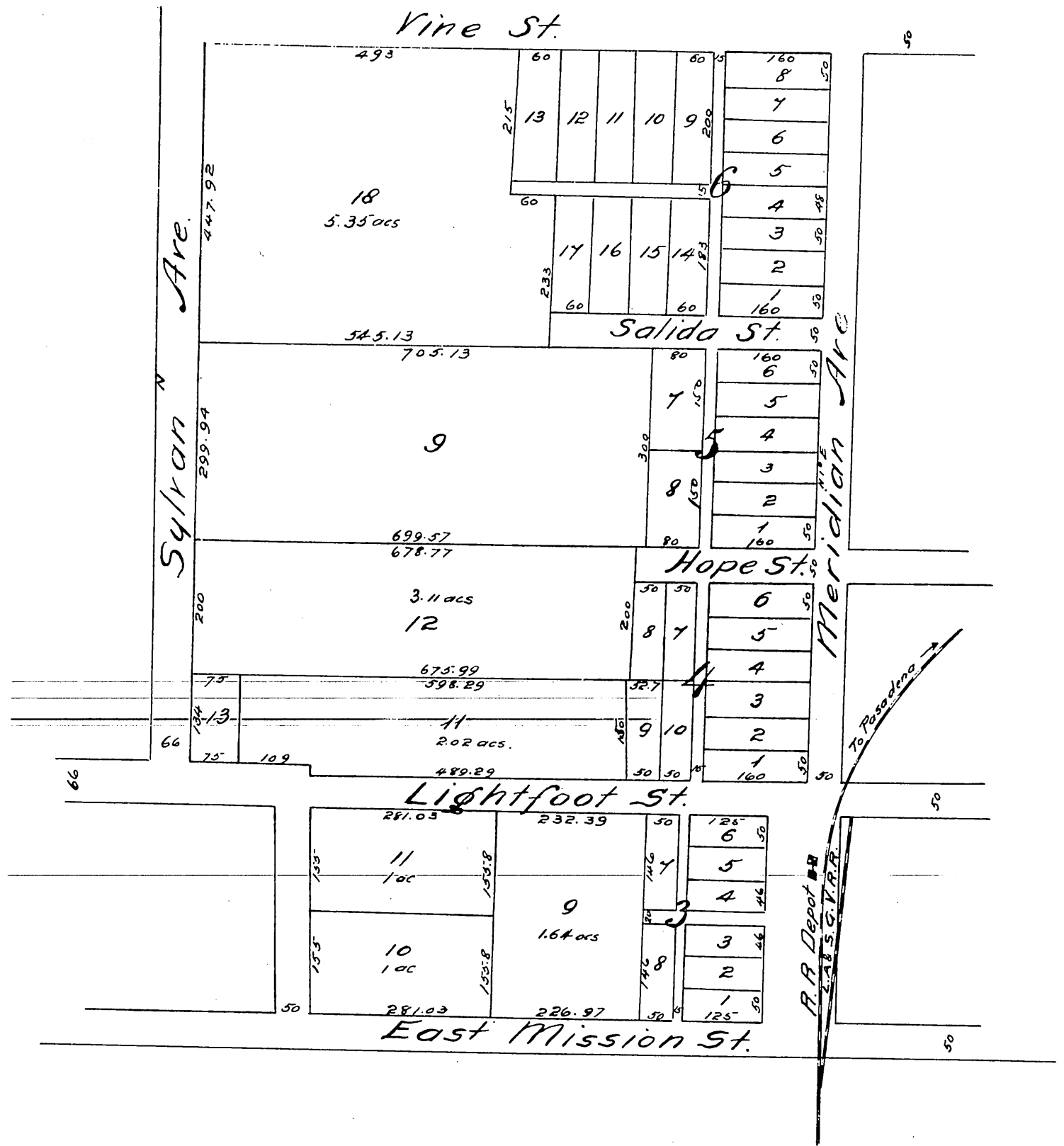




The Replat Map  
of  
O. R. Dougherty's Addition  
to the town of  
South Pasadena.  
Los Angeles Co., Cal.  
W. Thomson, Sur. Mar. 1886.  
Scale 100ft = 1 in.  
(Reduced one half)



A full line and correct copy of the original (reduced one half) recorded.  
June 23<sup>rd</sup> 1886 at 3<sup>40</sup> P.M. at request of O. R. Dougherty.

Frank A. Gibern. County Recorder.  
By G. S. Overill Deputy.