

PLAT

of the

100.

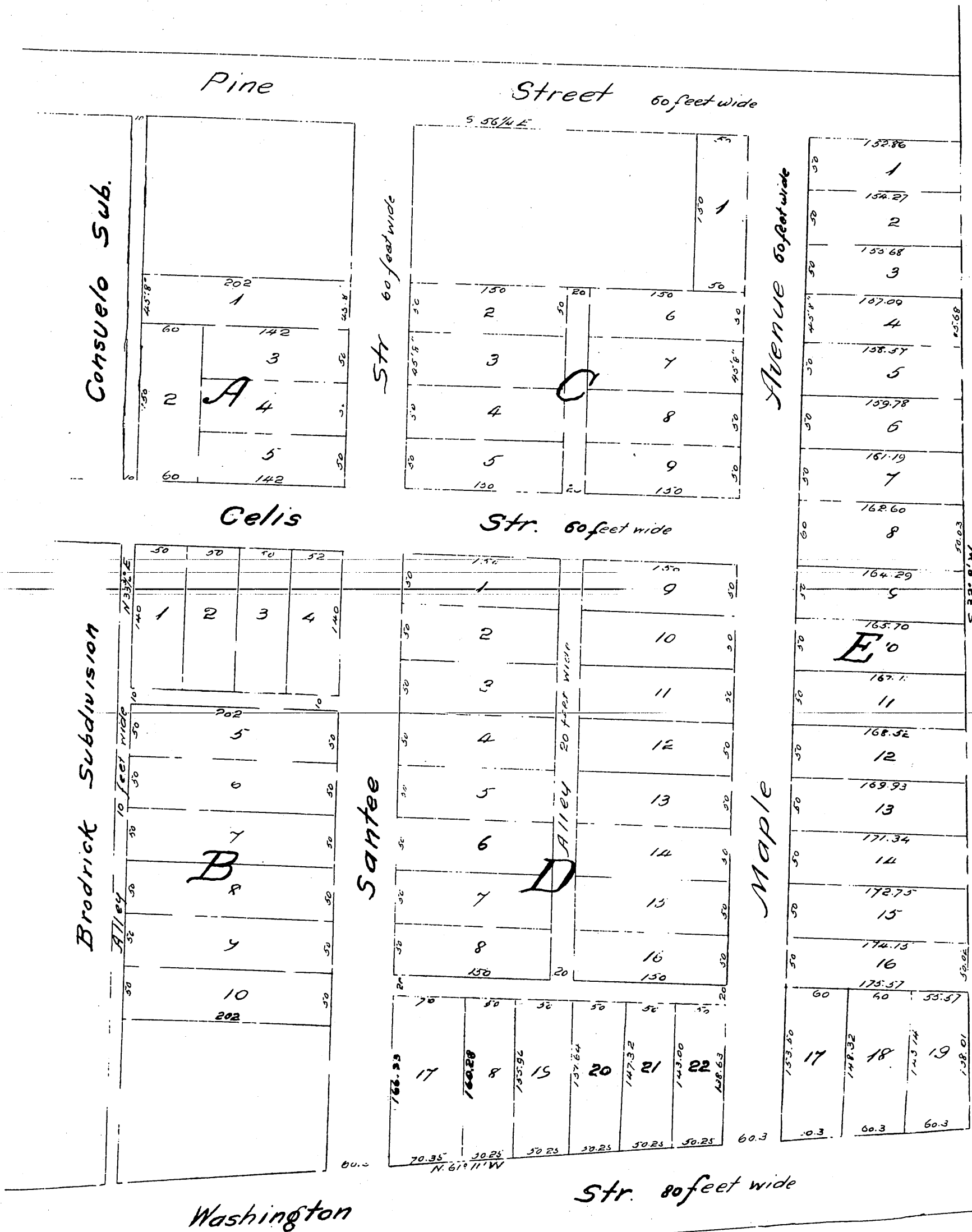
Newell & Rader Subdivision

OF THE

Celis Vineyard Tract

1886

Scale of 100 feet = 1 inch.



A full true and correct copy of the original, recorded June 29th 1886 at 12²⁷ M at request of J. M. de Celis.

Frank A. Gibson County Recorder.
By N. J. Aveill, Deputy.