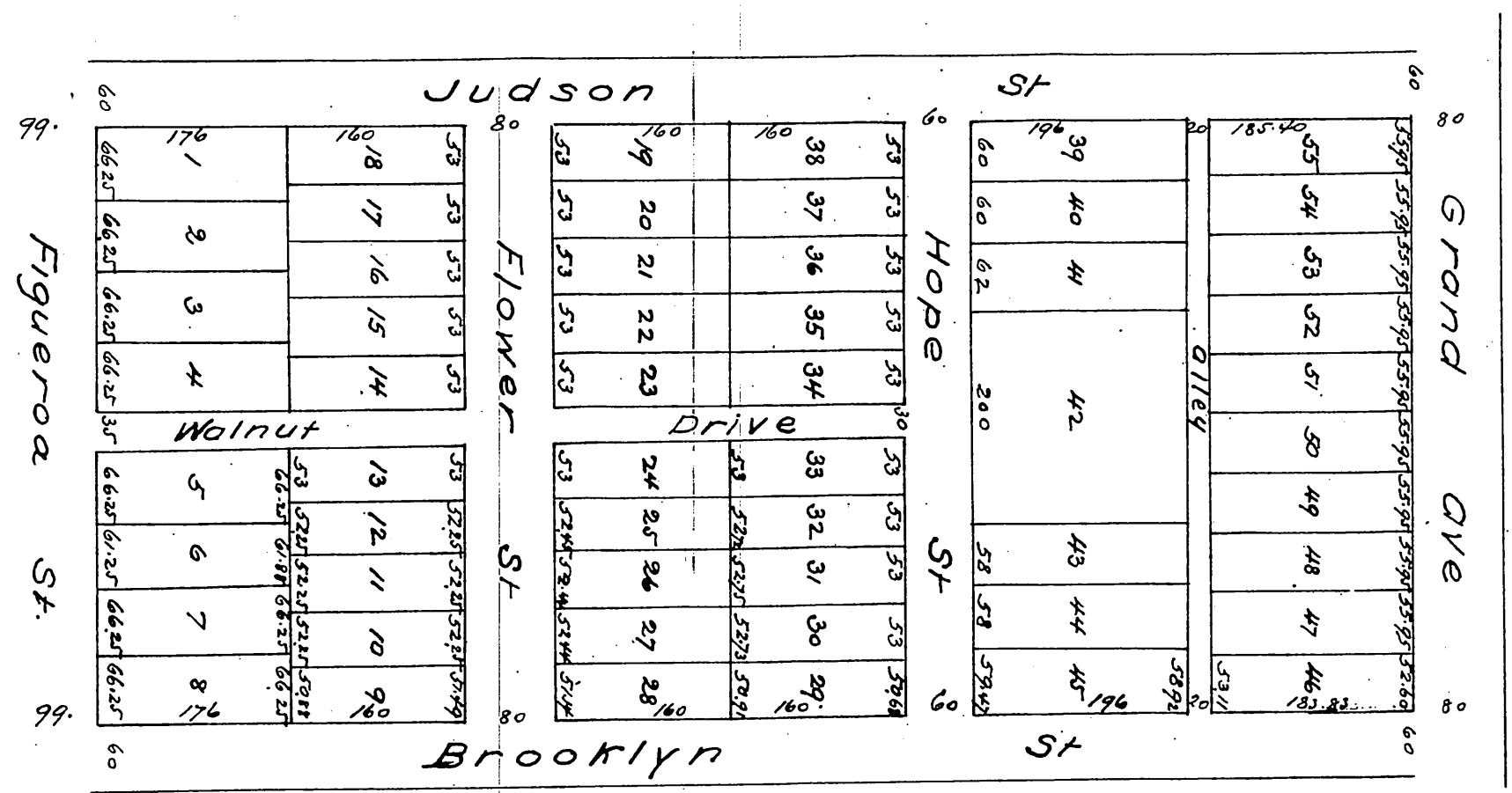


Judson Tract

Being S 1/2 of Lot 4 Blk 2 of H.S.
 Surveyed and Subdivided
 by Frank D. Lanterman
 August 1886



A full, true and correct copy of the original
 (reduced to the scale of 150 feet to one inch
 recorded Sept 11th 1886 at 11⁵⁸ A.M. at request
 of C. E. Day
 Frank A. Gibson County Recorder
 By Arthur Beay Deputy