

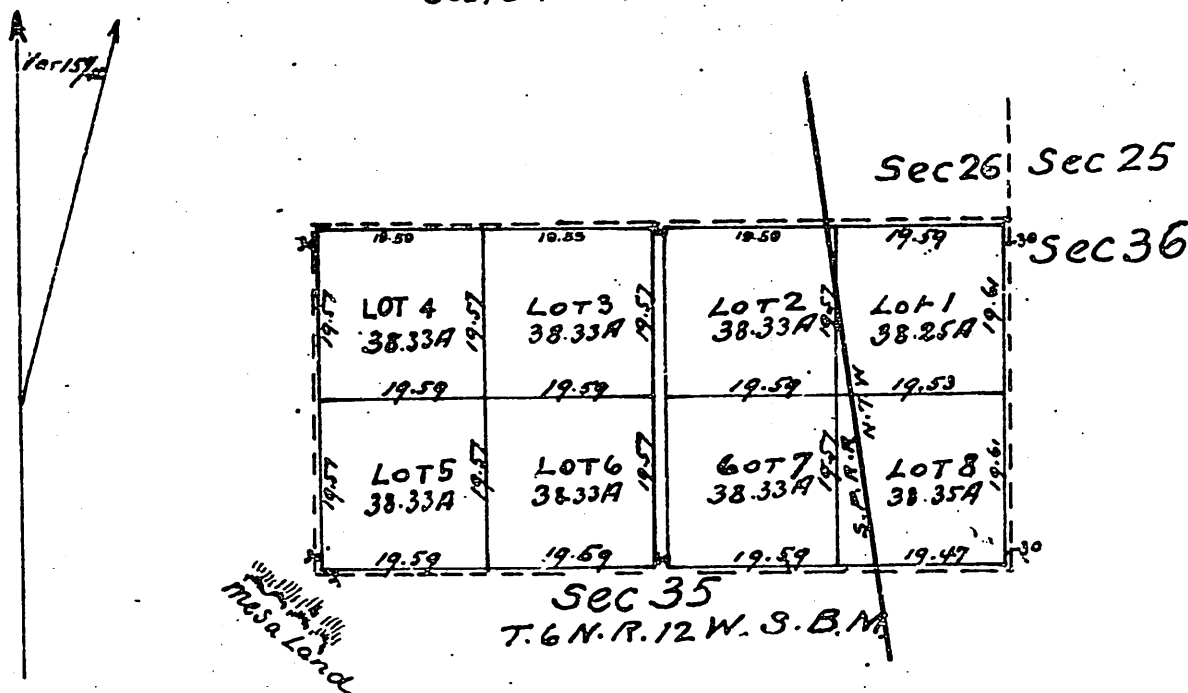
MAP SHOWING A PORTION OF
PALMDALE COLONY LANDS T.6.

N. R. 11 W. S. B. M.

Los Angeles Co. California
Subdivided at request of M. L. Wicks & J. J. Jones

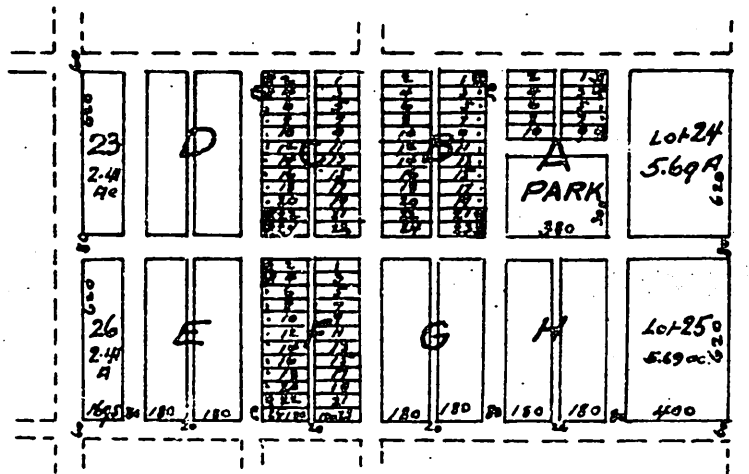
by
B. Bassell Surveyor
in January 1886.

Scale 10 chains to 1 inch



Note by Recorder

The following is given separately from the remainder of the plat and on the same scale as in original in order to show the subdivisions which could not be done if reduced.



a full, true and correct copy of the original (reduced to the scale of 20 chs to one inch) recorded Sept 16, 1886 at 10¹² A.M. at request of M. L. Wicks

Frank A. Gibson County Recorder
By Arthur Bray Deputy