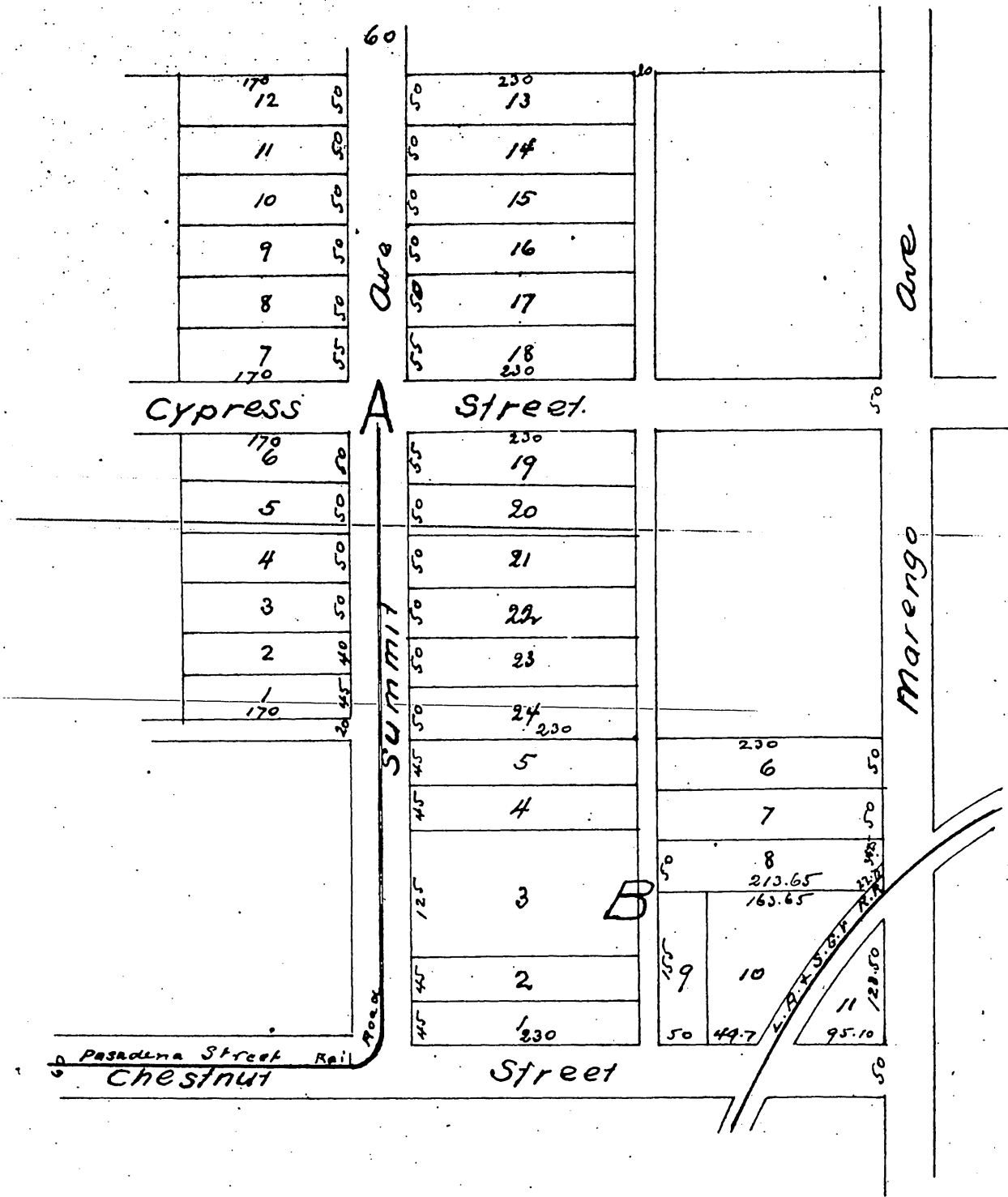


Plat
OF
S. Townsend's
subdivision of the
Summit Avenue Tract
Pasadena Cal

W. Thomson Sur. Scale 100ft = 1 in.



Appendix to Plat of S. Townsend's Subd of the Summit Avenue Tract Pasadena Cal
Recorded in Book 11 Miscellaneous Records page 13
Los Angeles Cal July 17, 1888

The above map is hereby amended as follows to wit by extending the portion of Cypress Avenue included within the boundaries of the Summit Avenue and the West Hill of the Pasadena Street Rail from the portion of Cypress Avenue made by the grade of such portion of Cypress Street for street or other purposes as contemplated in the original plat for street purposes hereby withdrawn and amended by George Rayburn Deputy
at request of S. Townsend
Frank A. Gibson County Recorder
By George Rayburn Deputy

A full, true and correct copy of the original
(reduced to the scale of 150 feet to one inch)
recorded Sept. 16th 1886 at 11:00 AM at request
of S. Townsend

Frank A. Gibson County Recorder
By Arthur Bray Deputy