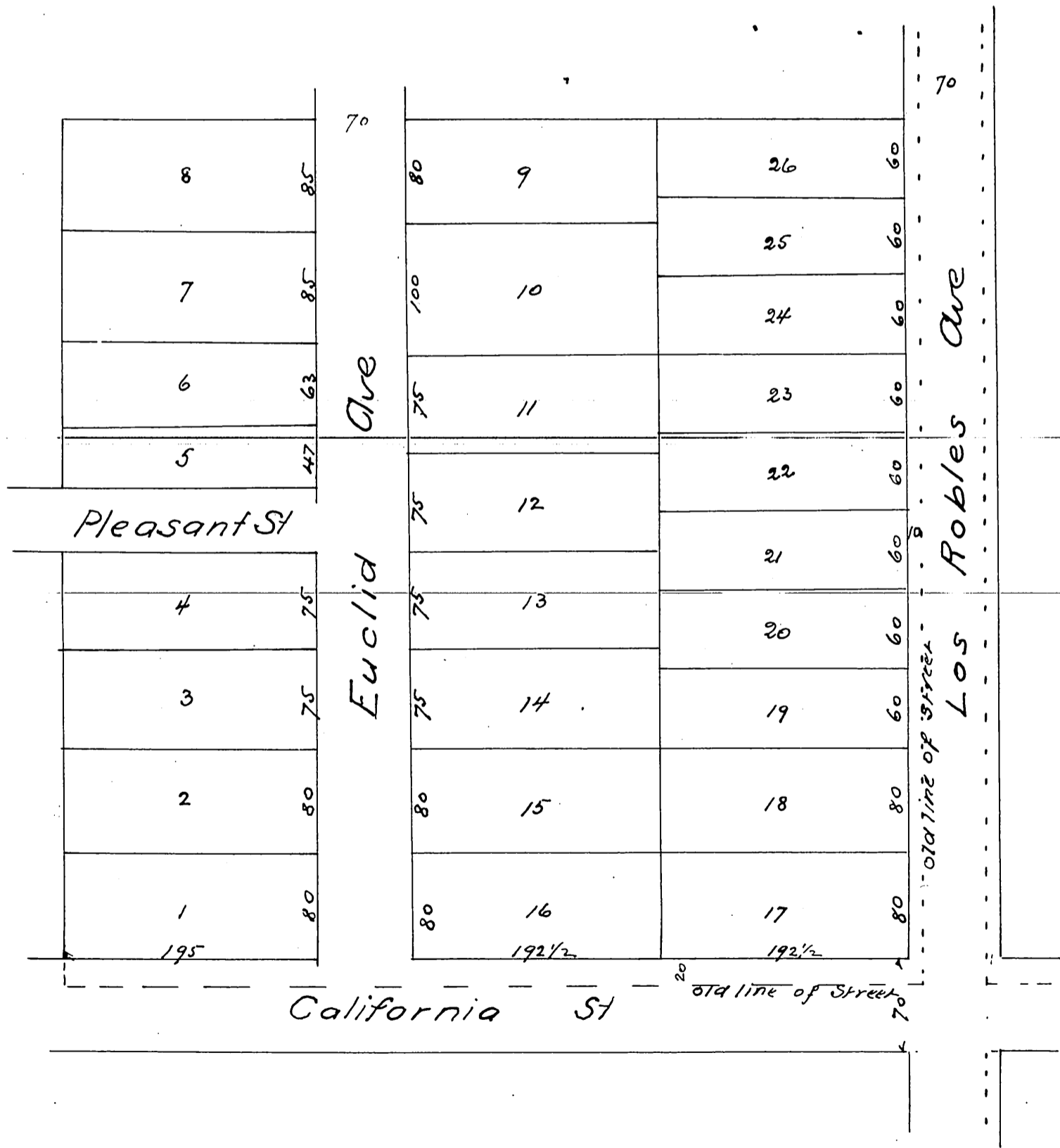


# Map of W. W. Doolittle's

Subdivision of Lot 11 Block 1 San  
Pasqual Tract in the Lakevineyard  
Land and Water Assn Pasadena Cal.  
Surveyed by Williel Thomson



a full, true and correct copy of the original  
(reduced to the scale of 100 feet to one inch)  
recorded Sept 23<sup>d</sup> 1886 at 2<sup>54</sup> P.M at request of  
W. W Doolittle  
Frank Alibson County Recorder  
By Arthur Bray Deputy