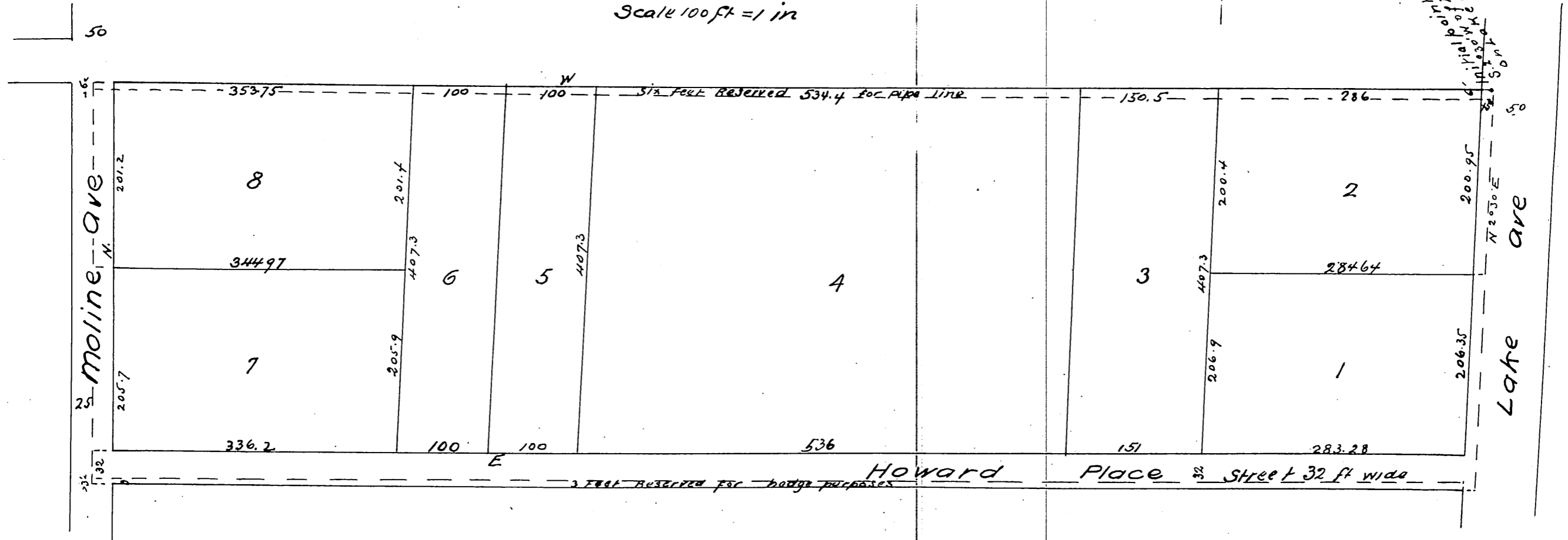


Plat of the Howard Place

Being a part of Block m of Painter
& Ball's Addition to Pasadena
Los Angeles Co California
Williell Thomson Sur
Scale 100 ft = 1 in



A full, true and correct copy of the original
recorded Sept 24th 1886 at 3³⁵ P.M. at request
of J. E. Howard
Frank A. Gibson County Recorder
By Arthur Bray Deputy

1111