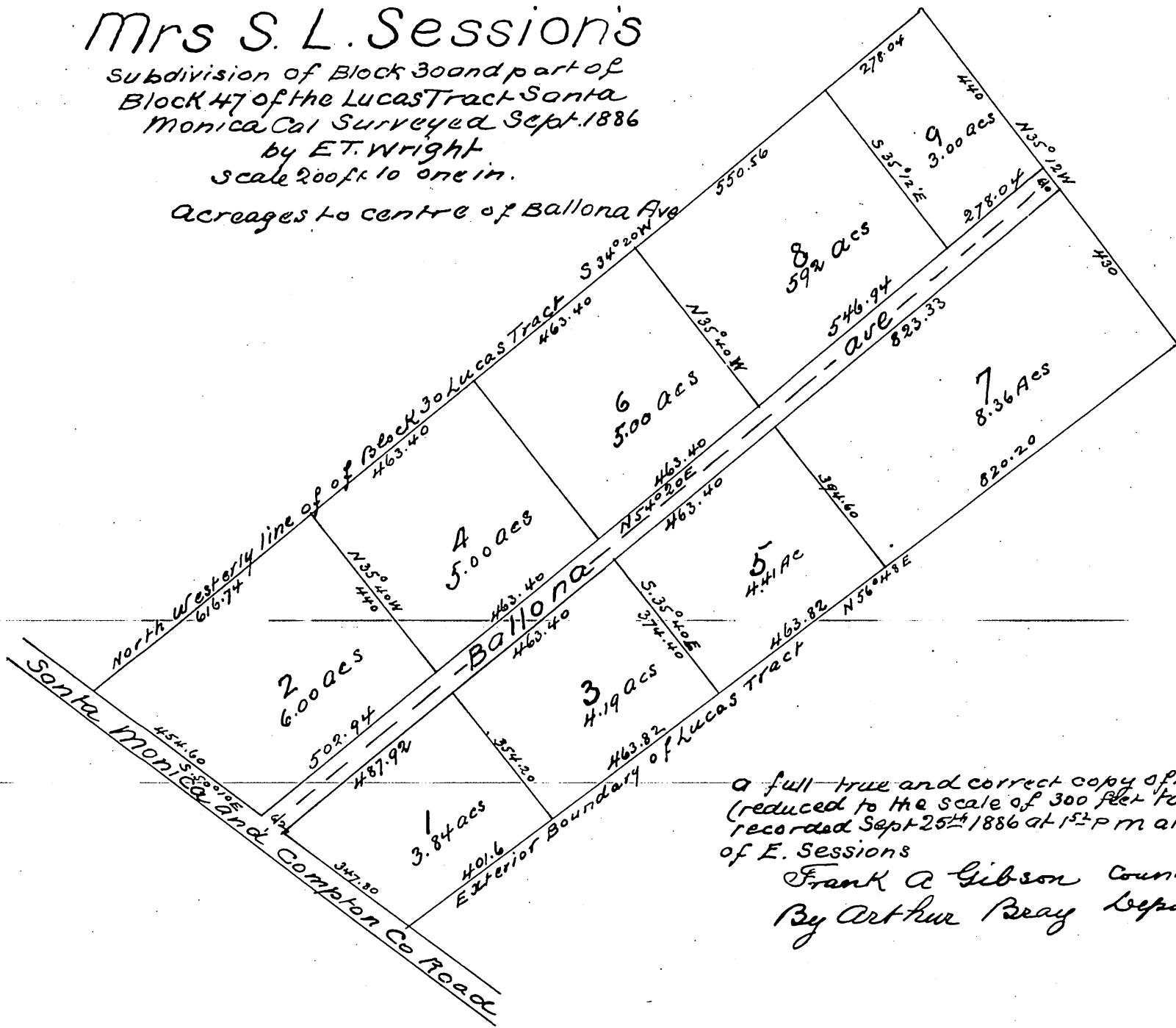


Map OF Mrs S. L. Session's

Subdivision of Block 30 and part of
Block 47 of the Lucas Tract Santa
Monica Cal Surveyed Sept. 1886
by E. T. Wright
Scale 200ft to one in.

Acres to centre of Ballona Ave



a full true and correct copy of the original
(reduced to the scale of 300 feet to one inch)
recorded Sept 25th 1886 at 1st P M at request
of E. Sessions
Frank A Gibson County Recorder
By Arthur Peay Deputy