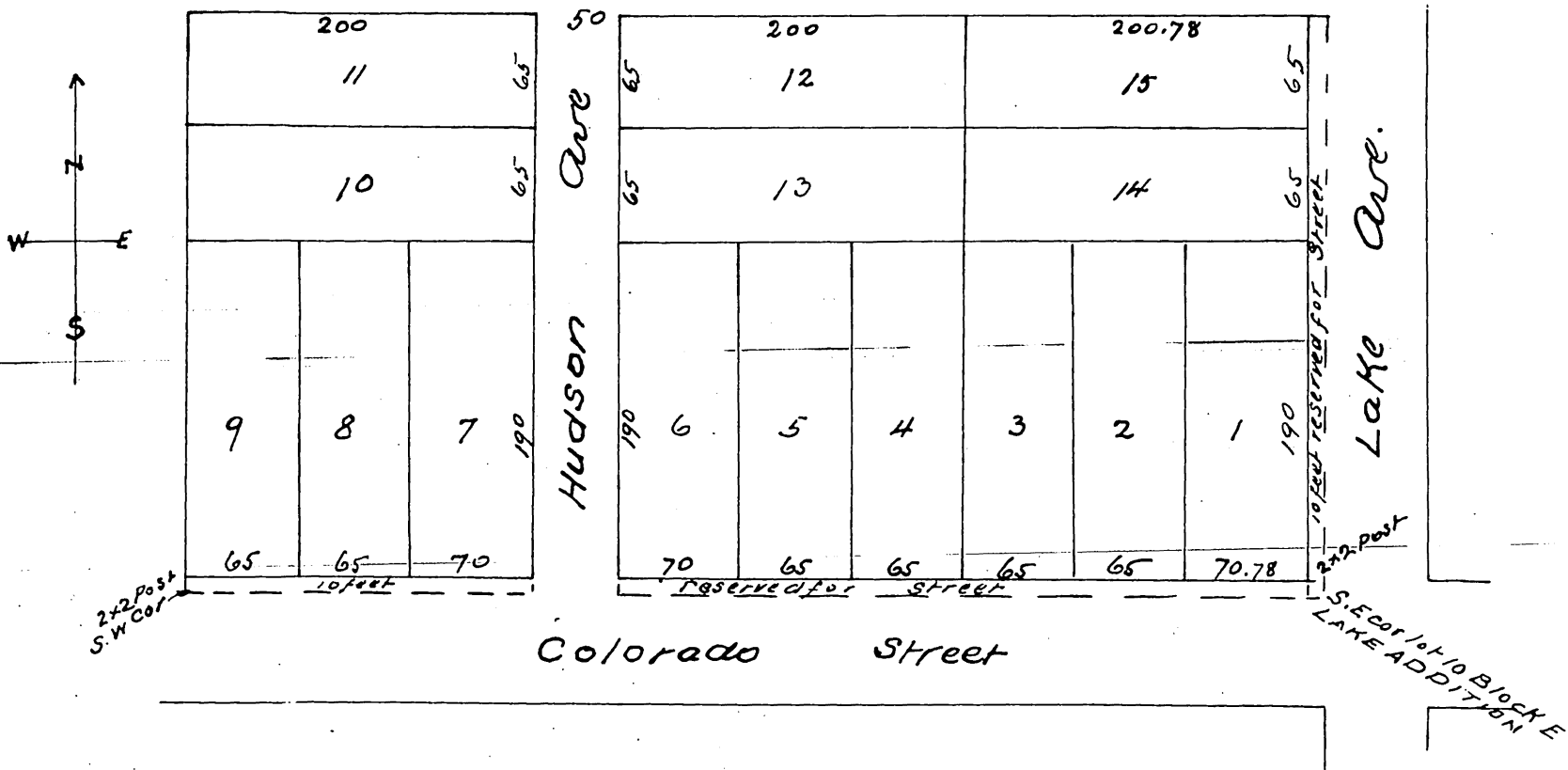


Map of Lake Addition

a sub-division of the South one half of Lot 10 Block E of the lands of the Lake Vineyard Land and Water Association

For a more particular description refer to page 315 book 3 Miscellaneous Records of Los. A. Co.

W. Thomson Sur.



Note Blue lines mark Boundary of Lake Addition
10 ft is reserved on whole length of Southern and Eastern boundaries for Street and is not sold with any lots

A full, true and correct copy of the original (enlarged to the scale of 100 feet to one inch) recorded Sept 28th 1886 at 9^o 30^m at request of F. B. Wetherby

Frank A. Gibson County Recorder
By Arthur Bray Deputy