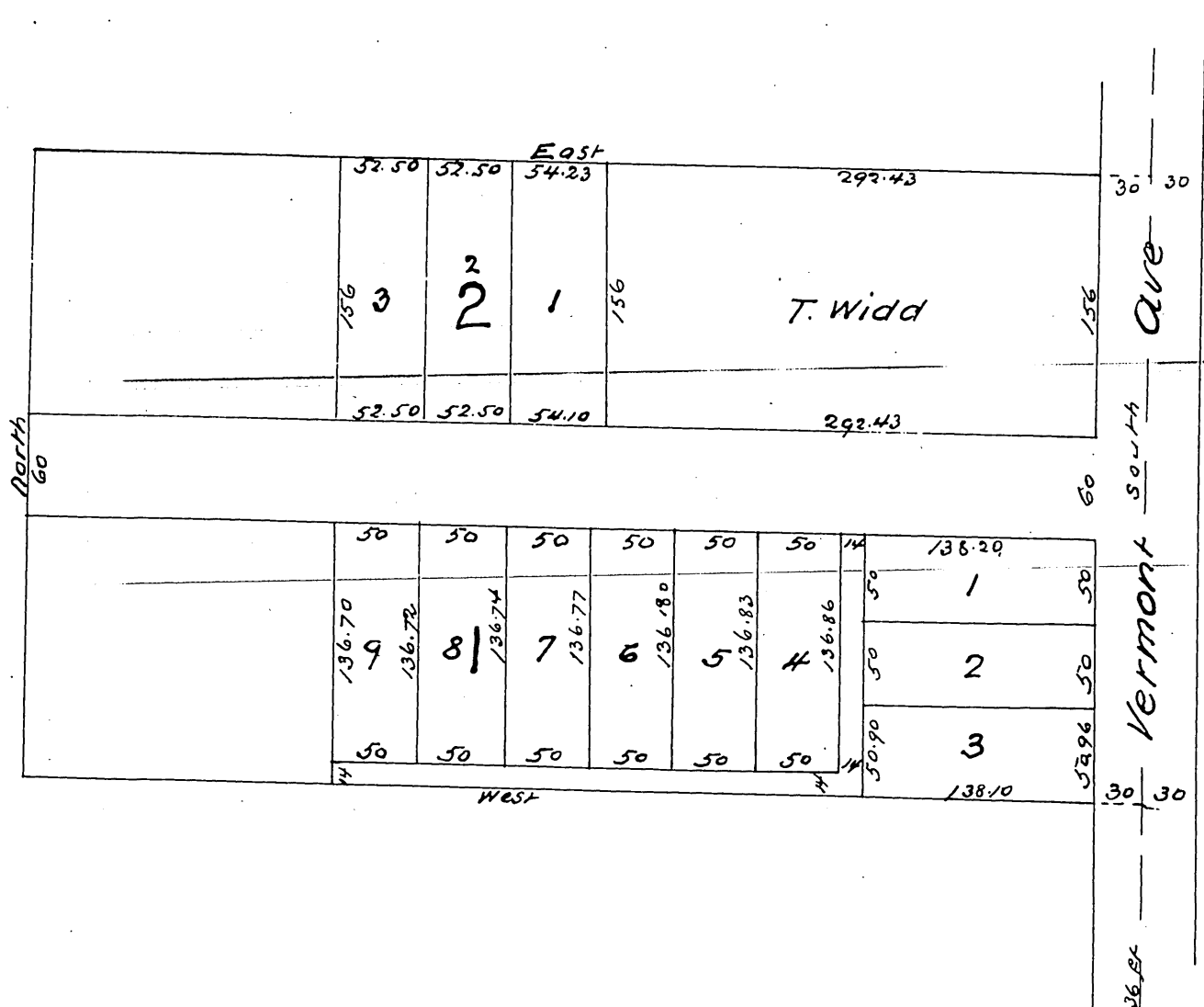


Map OF T. Widd's Subdivision

of a portion of the NE 1/4 of the SE 1/4
of the S. E. 1/4 of Sec 36 T. 15. R. 14 W. S. B. M.
Surveyed Sep 11 1886 by E. T. Wright
Scale 100 ft to one inch



A full true and correct copy of the original
recorded Oct 1st 1886 at 11:30 a.m. at request of Chas V. Hall
Frank Allison County Recorder
By Arthur Bray Deputy.

65726.84
Cor to Twp 15 and R 14 W.