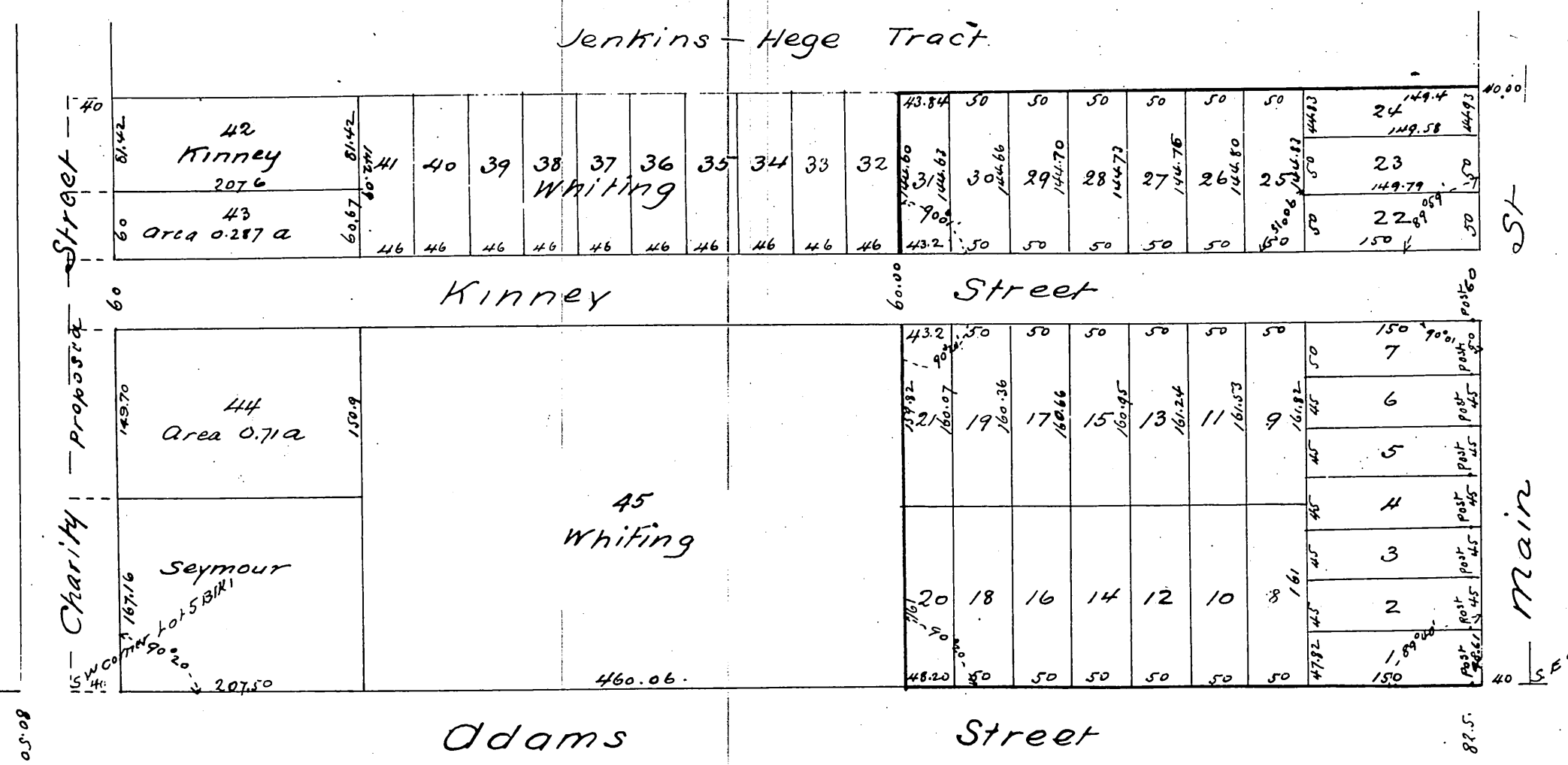


# Map OF THE Abbot Kinney Tract

City of Los Angeles  
Subdivided at request of Abbot Kinney  
and H. K. W. Bent in June 1886  
by Geo. C. Knox  
Scale 100 feet is one inch



A full true and correct copy of the original  
 reduced to the scale of 120 feet to one inch  
 recorded October 2, 1886 at 2:19 P.M. at request  
 of J. J. Miller  
 Frank A. Gilman County Recorder  
 By Arthur Gray Deputy

Note - Posts on Main Street between Kinney St and Adams St set 50 feet westerly from West boundary of Main St on account of Zanja  
 The Abbot Kinney Tract is contained within the area shown thus