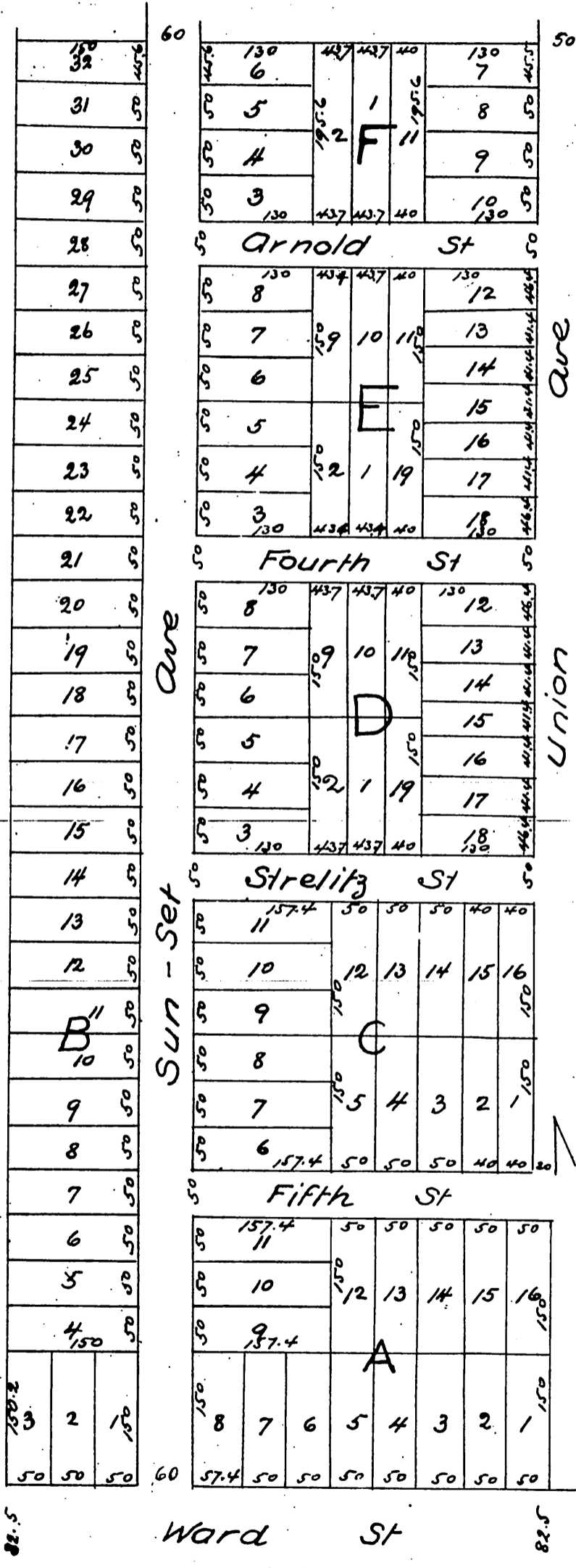


Map OF THE Sun-Set Tract

Being a Subdivision of Division B of Lot 5 Block 38
Canal and Reservoir Lands
Los Angeles, Cal



Frank D. Lanterman Surveyor
June 1886

Scale 2500 ft to 1 meter

A full, true and correct copy of the original
(reduced to the scale of 150 feet to one inch)
recorded Oct 6th 1886 at 10th m at request of

C. E. Day
Frank A. Gibson County Recorder
By Arthur Bray Deputy