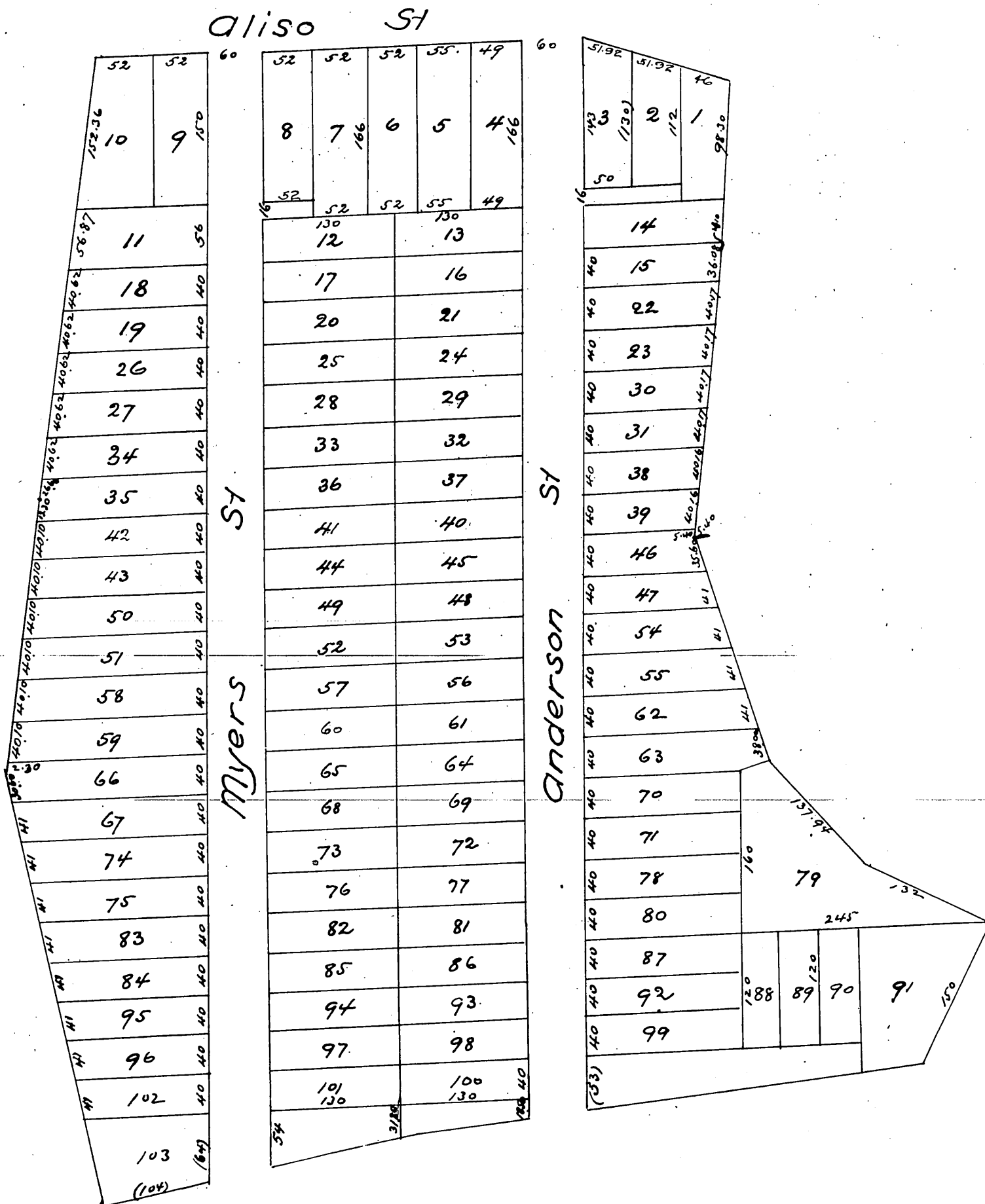


# Myers Tract IN Los Angeles City

as subdivided by  
J.W. Anderson, M.L. Wicks and Lotspeich Bros.



A full true and correct copy of the original  
recorded Oct 22<sup>nd</sup> 1886 at 2<sup>15</sup> P.M. at request of  
M.L. WICKS  
Frank A. Gibson County Recorder  
By Arthur Bray Deputy.