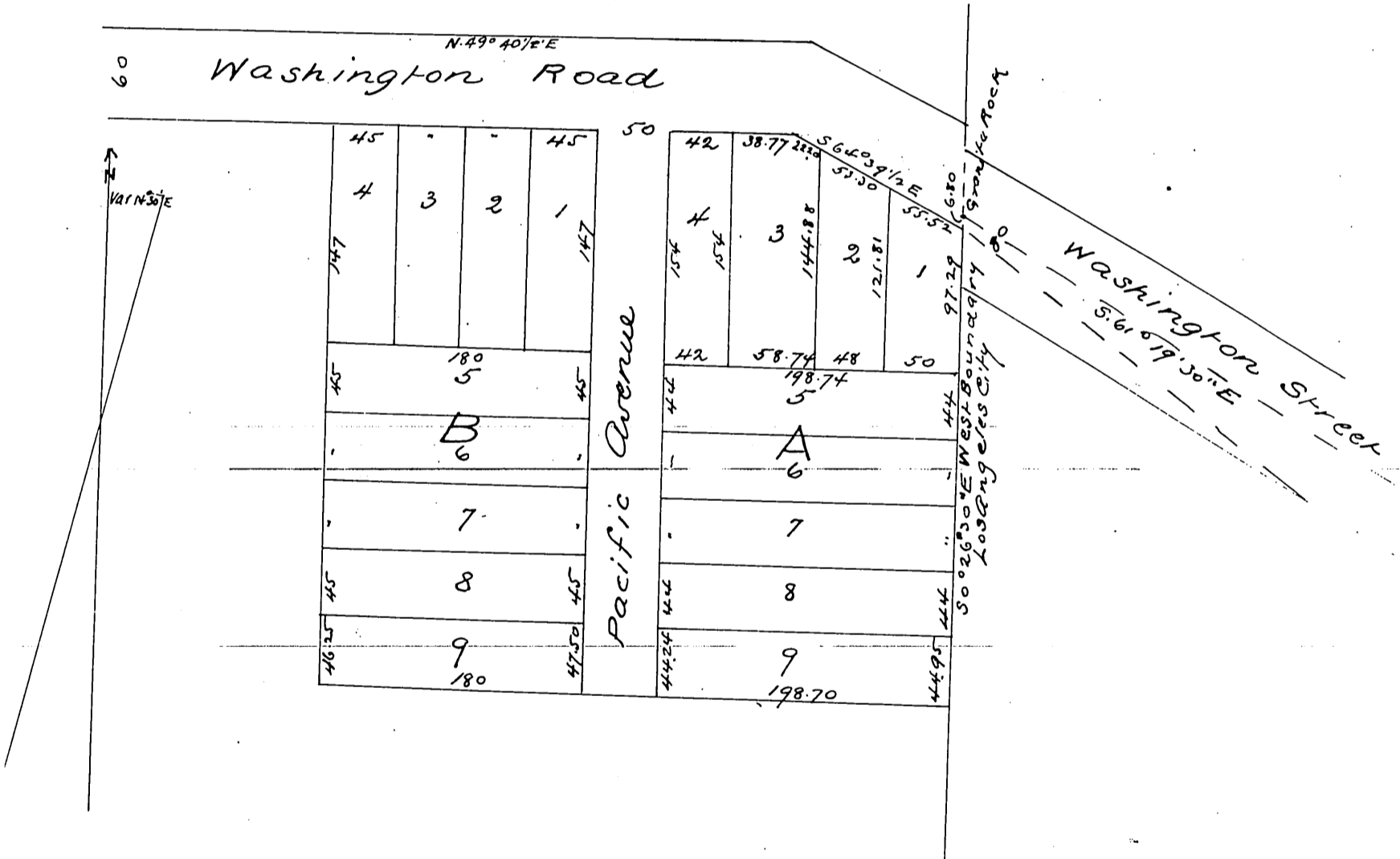




# B. F. Hall's Subdivision of parts of Lots land 2 of the Freeman Tract

Being Located in Section 31 Township 1 S. R. 13 W  
Surveyed Oct 1886 By B. F. M<sup>c</sup>Clure

Scale 1 in = 50 ft



A full, true and correct copy of the original  
(reduced to the scale of 100 feet to one inch)  
recorded Oct 27<sup>th</sup> 1886 at 11<sup>30</sup> A.M. at request  
of B. F. Hall  
Frank D. Gibson County Recorder  
By Arthur Bray Deputy