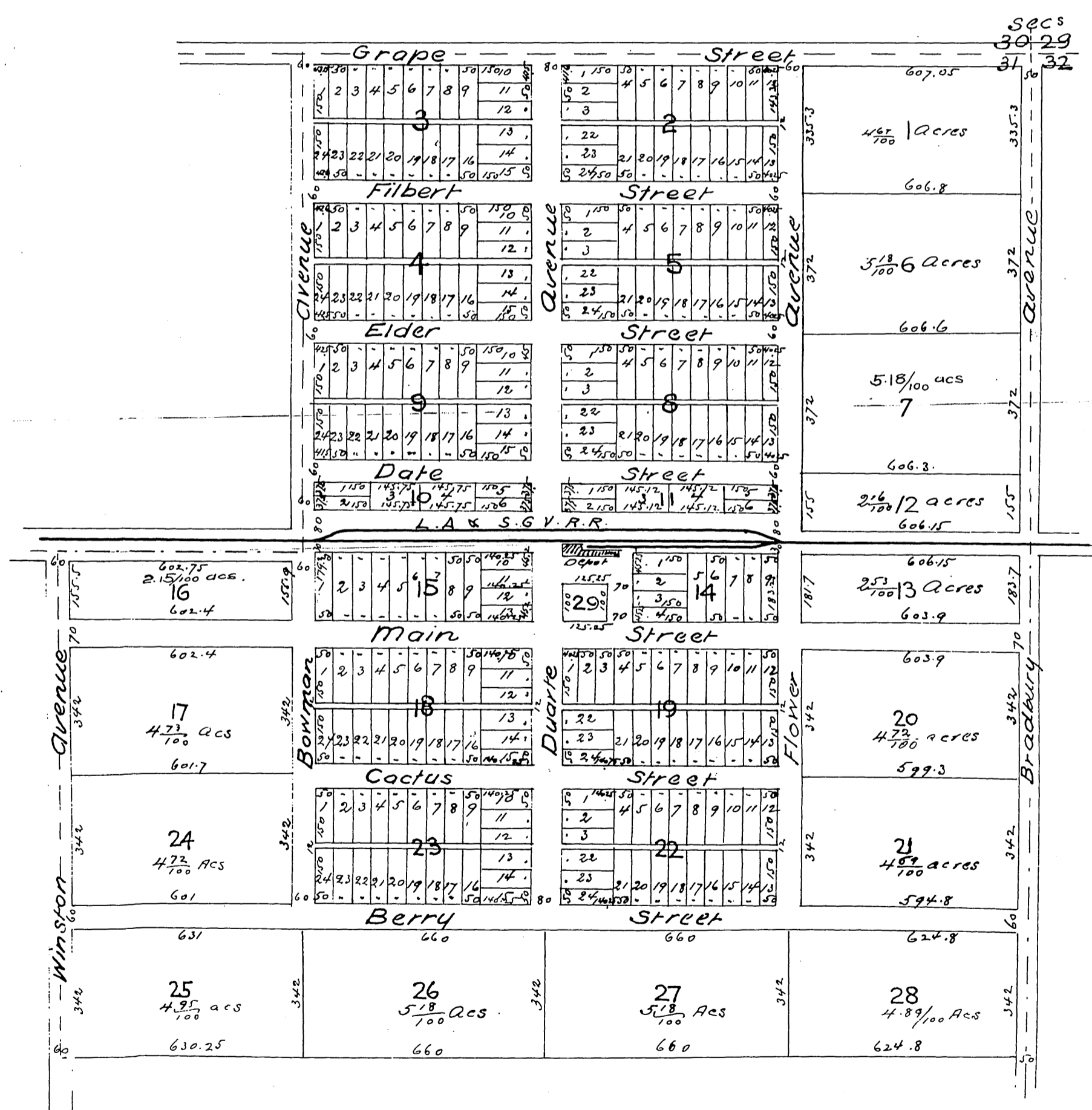


# Davis' Addition TO Duarte

Being Lots 1, 7, 8 and East 1/2 of Lot 2  
in Sec 31 T.1.N.R.10W.S.B.M  
Scale 200 to the inch



A full true and correct copy of the original  
 (reduced to the scale of 300 feet to one inch)  
 recorded Oct 28. 1886 at 2:54 P.M. at request  
 of C.C. Davis  
 Frank A. Gibson County Recorder  
 By Arthur Bray Deputy