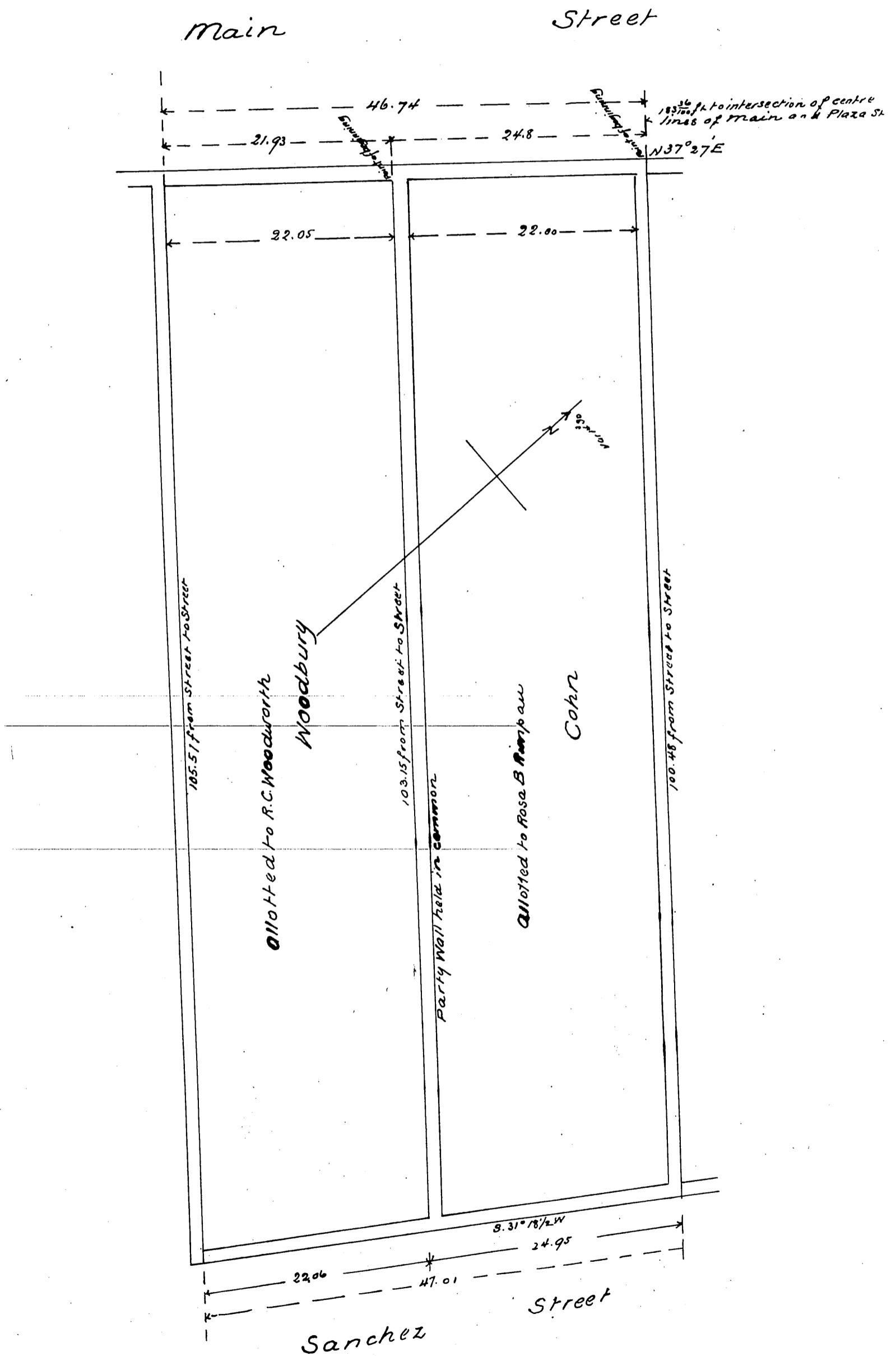


Map
 of
 Property on Main Street
 allotted to Rosa B Rimpau and R.C. Woodworth under final decree in partition
 Superior Court Case No. 4612 Decree entered Nov. 1 1886
 Surveyed Oct 2nd 1886 by W.F. McClure
 Scale 10 ft per inch



A full true and correct copy of the original recorded
 Nov. 3rd 1886 at 3:10 PM at request of H.W. O'Melveny
 Frank A. Gibson County Recorder
 By Arthur Bray Deputy