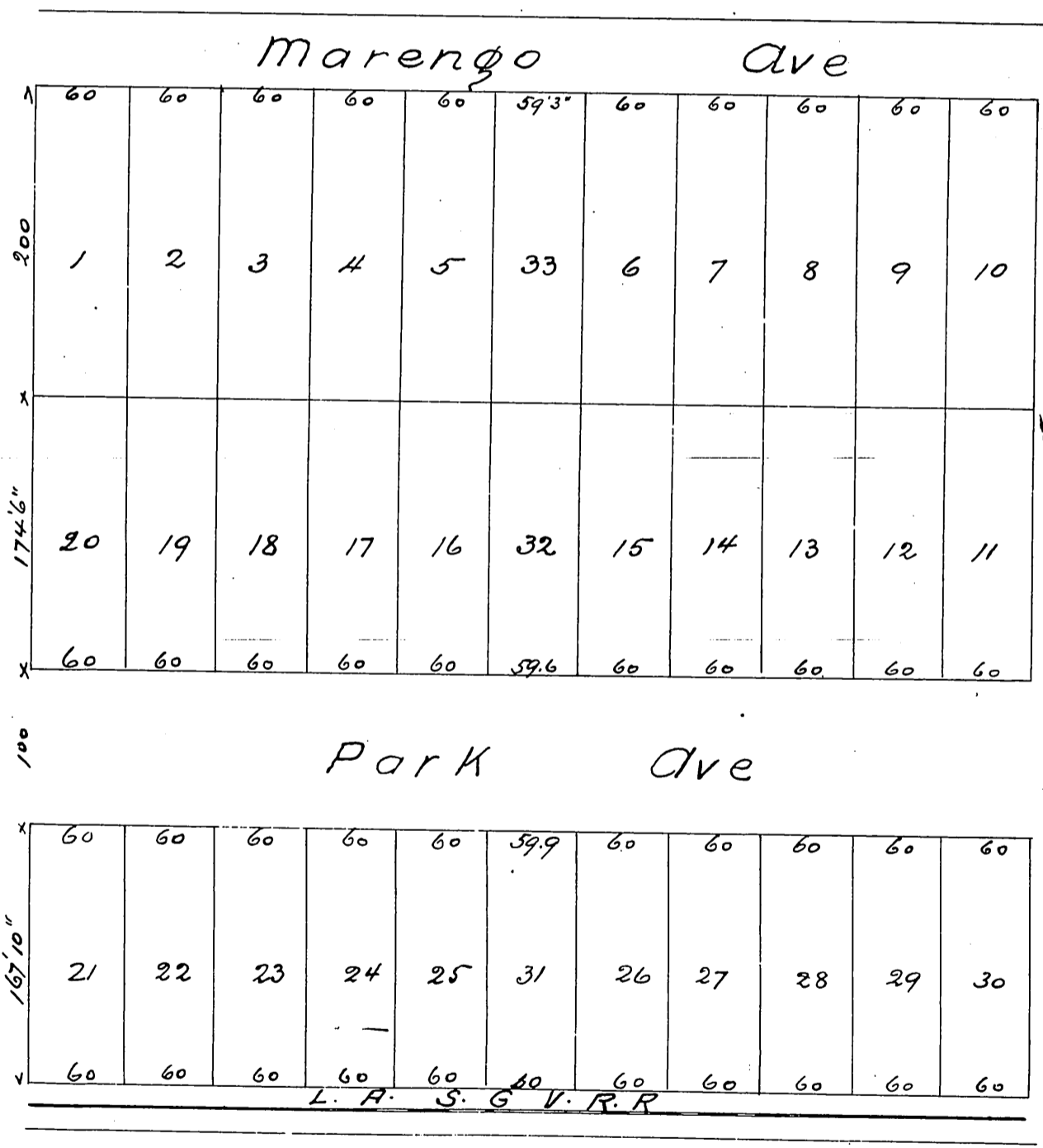


# The 100 Foot Avenue California Tract Pasadena Cal.

Being Lot 6 Block N San Pasqual Tract as  
Subdivided by Geo Wm Spawforth Esq  
Surveyed by Gervaise Purcell B.A.C.E.  
Scale 50 feet to 1 inch



N ←

A full, true and correct copy of the original  
(reduced to the scale of 100 feet to one inch)  
recorded Nov 9. 1886 at 2:21 P.M. at request  
of G.W. Spawforth  
Frank A. Gibson County Recorder  
By Arthur Bray Deputy