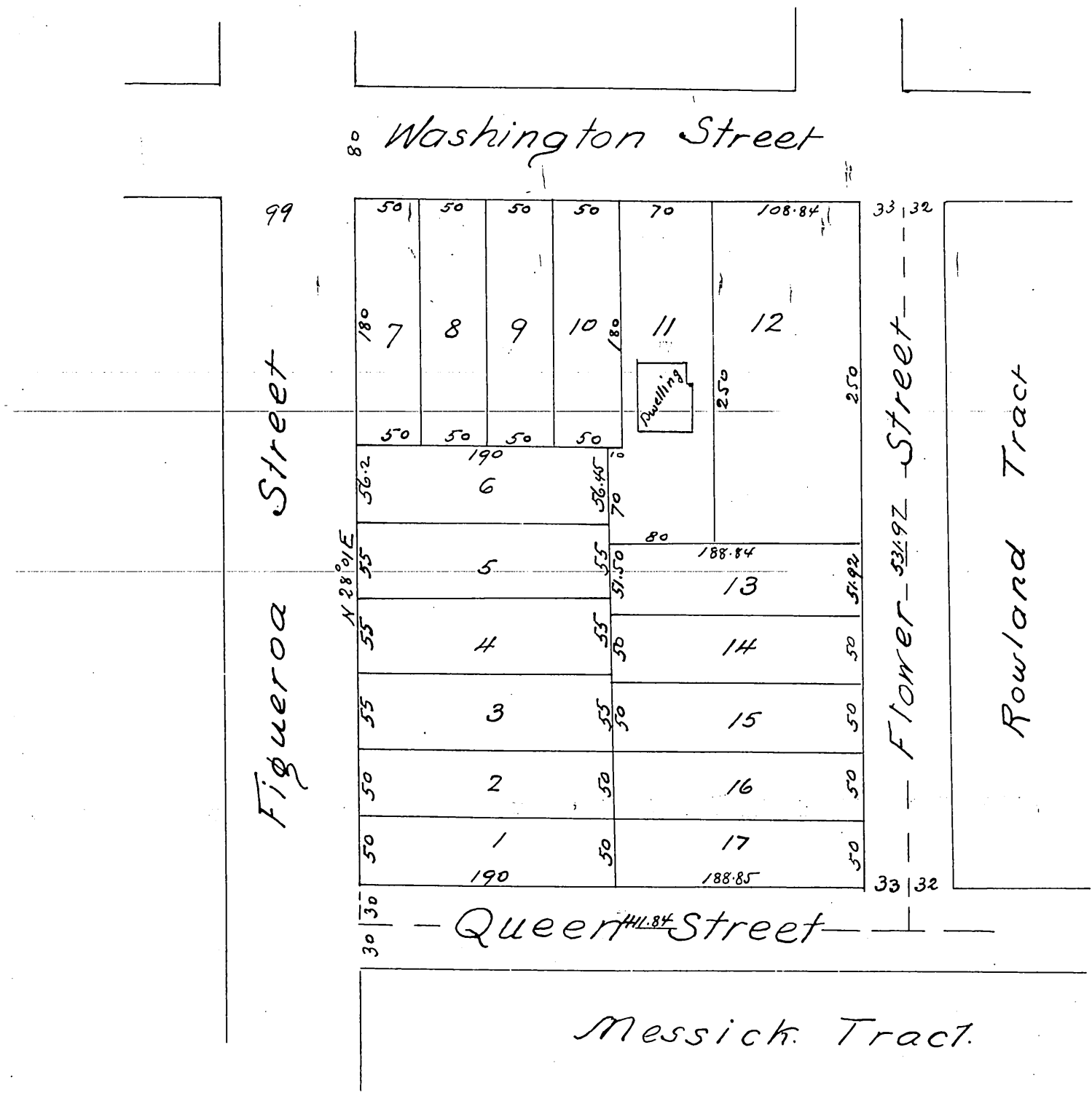


Map  
of  
Edgars Subdivision  
of a part of  
Lot 3 Block 1 Hancock Survey of City Donation Lots  
of  
Los Angeles California  
Subdivided in October 1886 by John Goldsworthy  
Scale 50ft. = 1 inch



A full line and correct copy of the original (reduced to the scale of 100 feet to an inch) recorded Nov. 9<sup>th</sup> 1886 at 2:24 P.M. at request of N.F. Edgar  
Frank A. Gibson County Recorder  
By Arthur Bray Deputy