



MAP OF

J. MARION BROOKS'

SUBDIVISION

> OF PART < of the Philbin Tract < IN THE >

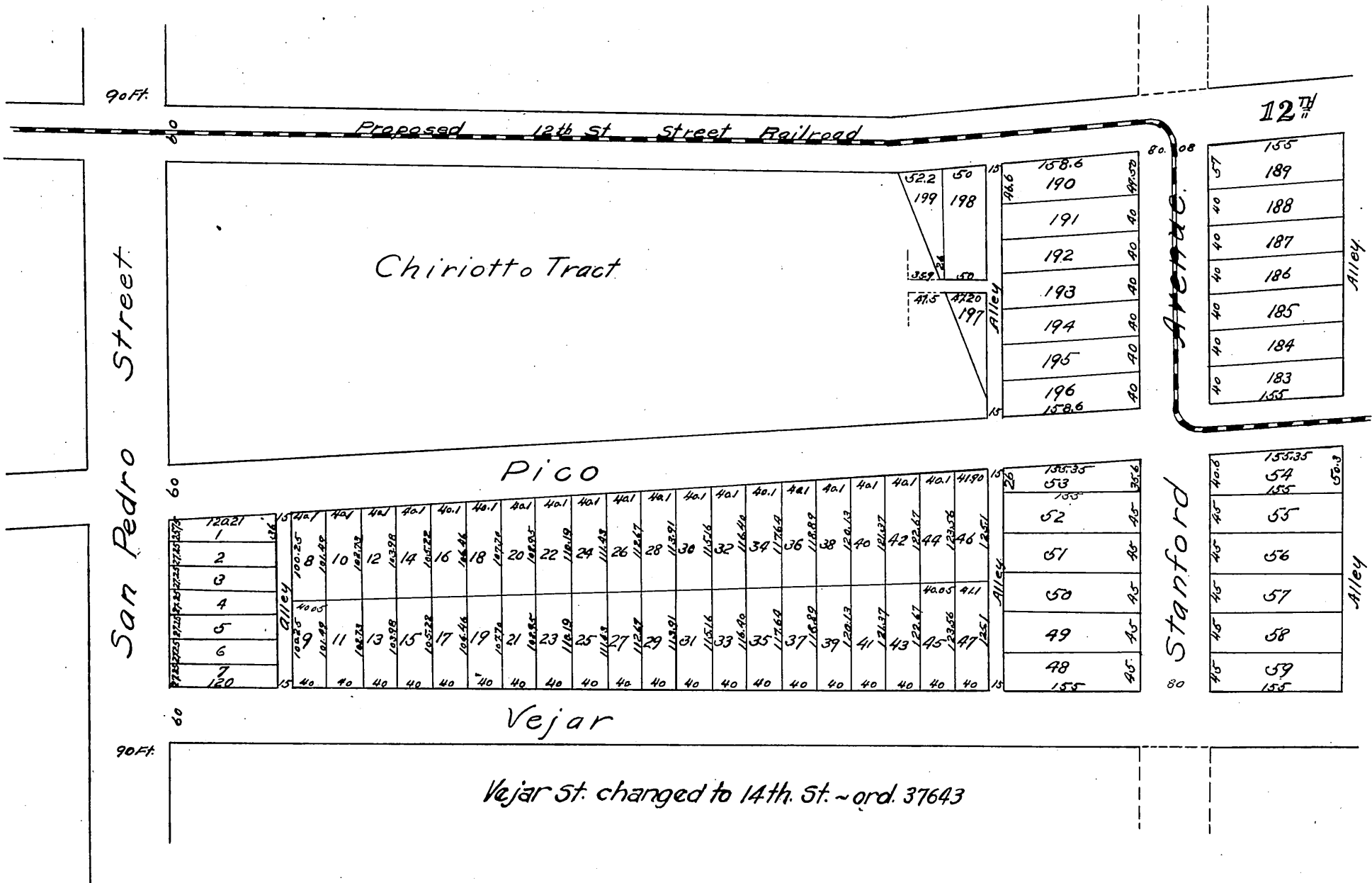
CITY OF LOS ANGELES.

SURVEYED BY

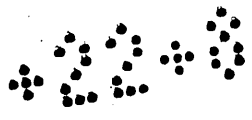
J. A. BERNAL ^{SR} CHAS. E. MILES.

AUGUST, 1887.

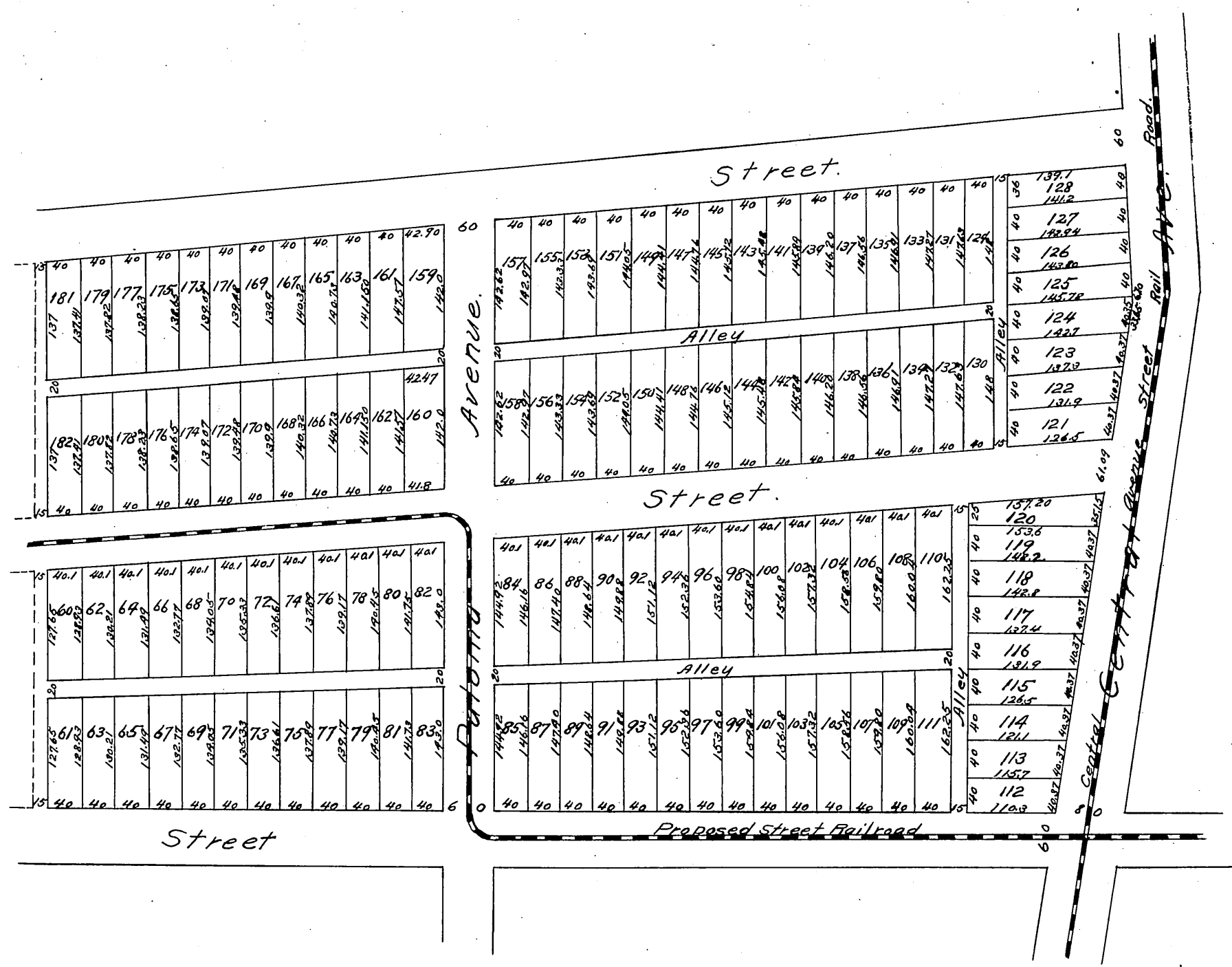
Scale 60 feet to the inch.



Compton



Original reduced to scale of 150 feet to one inch
 Recorded August 19, 1887 at request of
 J. Marion Brooks.



5-11-11