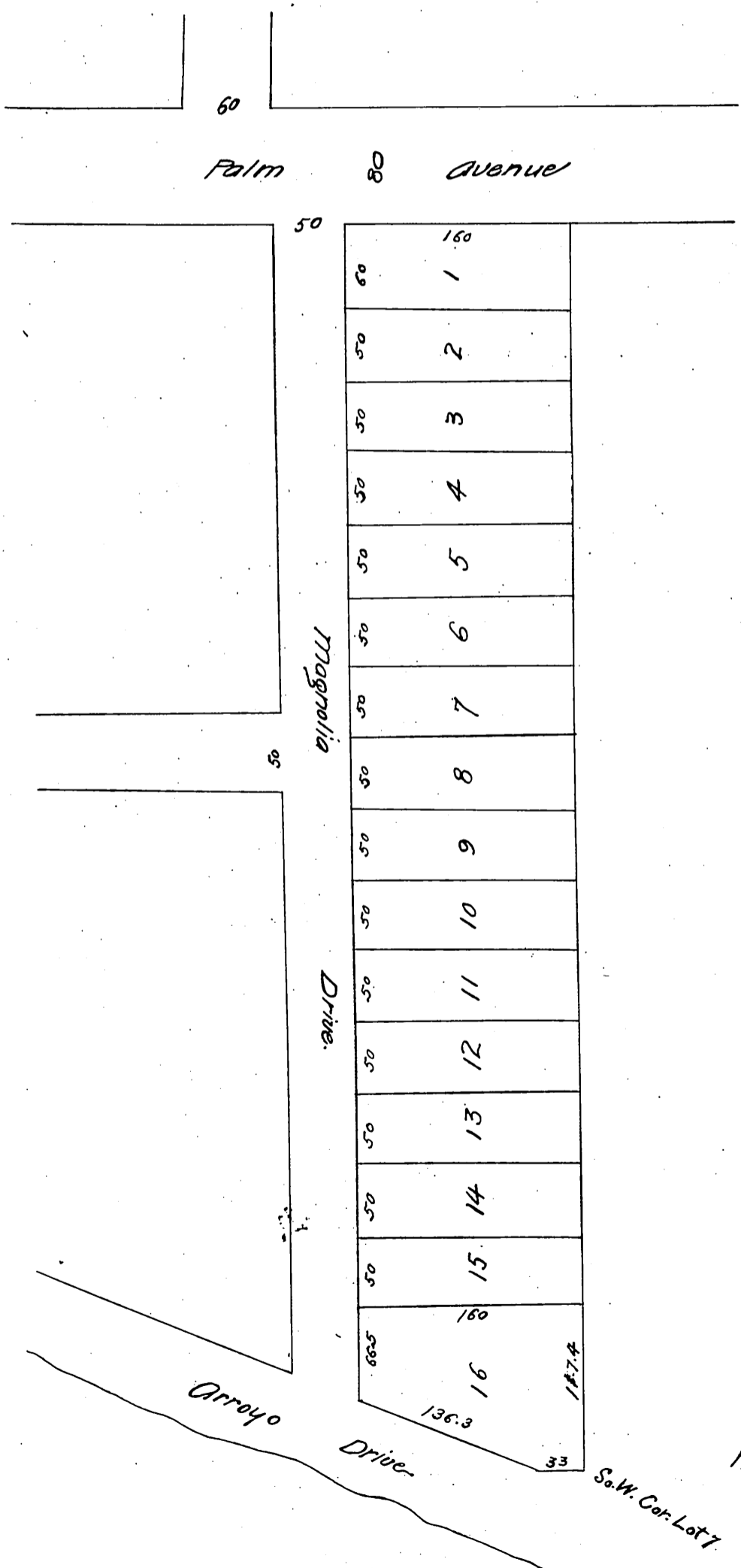


Map of B. A. Marsh's Subdivision
South Pasadena

Being 4 acres off of the south side of the
of #7 on Map of Calvin Fletcher's Subdi-
vision recorded in Book 4, Page 546 of the
miscellaneous records of Los Angeles
County, California. Figgins Bros, Surveyors.



Recorded Aug 24, 1887, at request of B. A. Marsh

Por. lot 16 for St. purp. D:53-173 O.R. 4615-246

*Copy of
C.M.M.*