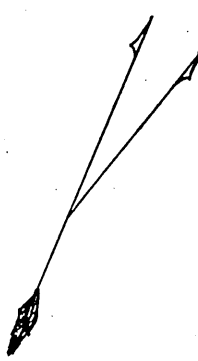
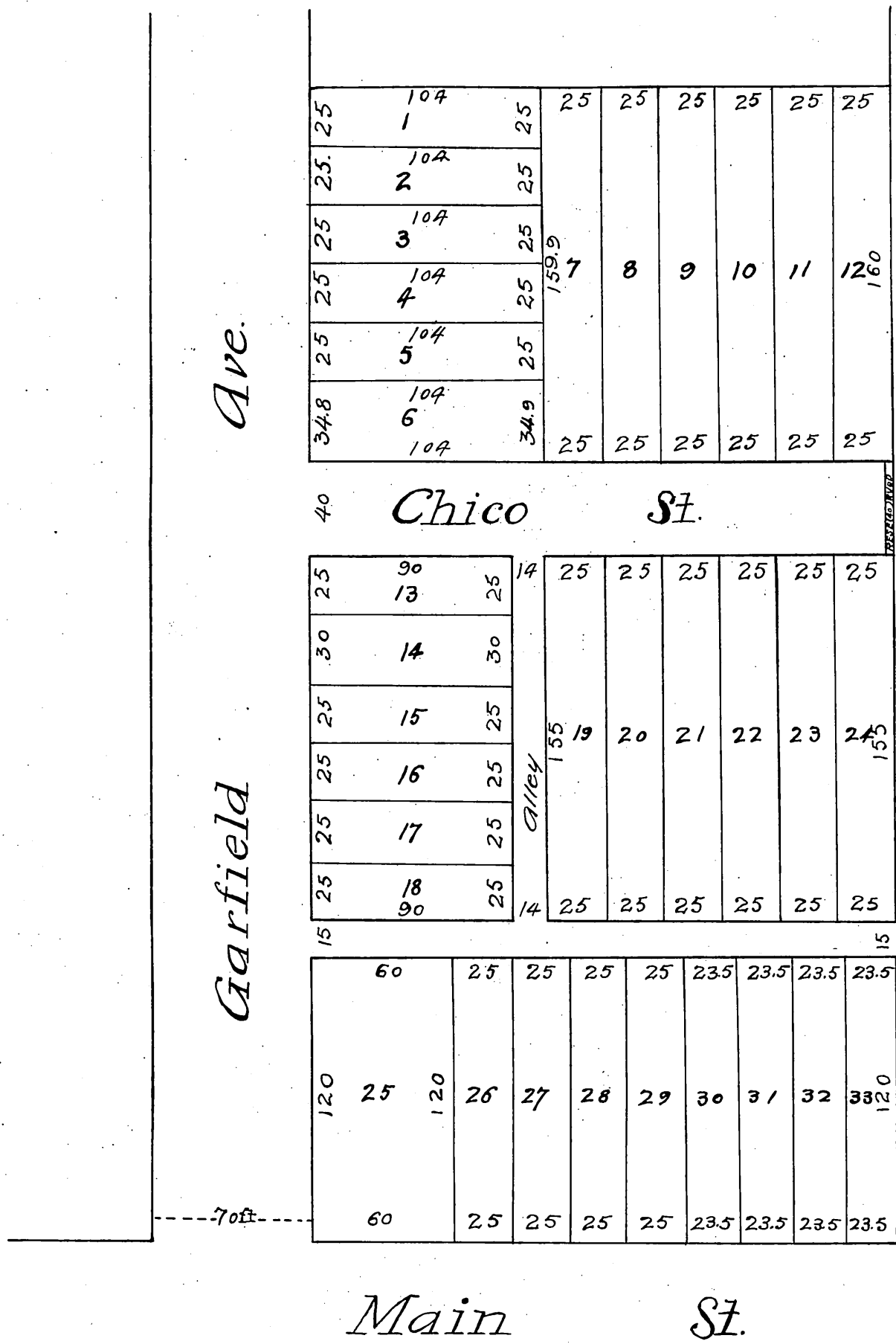


W.P. Jones Subdivision
of Lot 9 and south part of Lot 8 of
O. B. Adams Subdivision of Lots 4, 5
and 6, Range 8, and Lots 4, 5 and 6, Range
9, Alhambra Addition, Los Angeles
Co. Cal. Surv. Feb. 1883 by E.T. Wright,
Surv. Subdivided Aug 1887 by G.F.P.
Day, G.E. Scale 30 Feet to one inch.



Deeds for Main St widening See G.S. 7558.
Recorded Aug. 25, 1887.
Request of W.P. Jones
Reduced one half.

Compl'd