

Map of A.W. Bunker's Subdivision

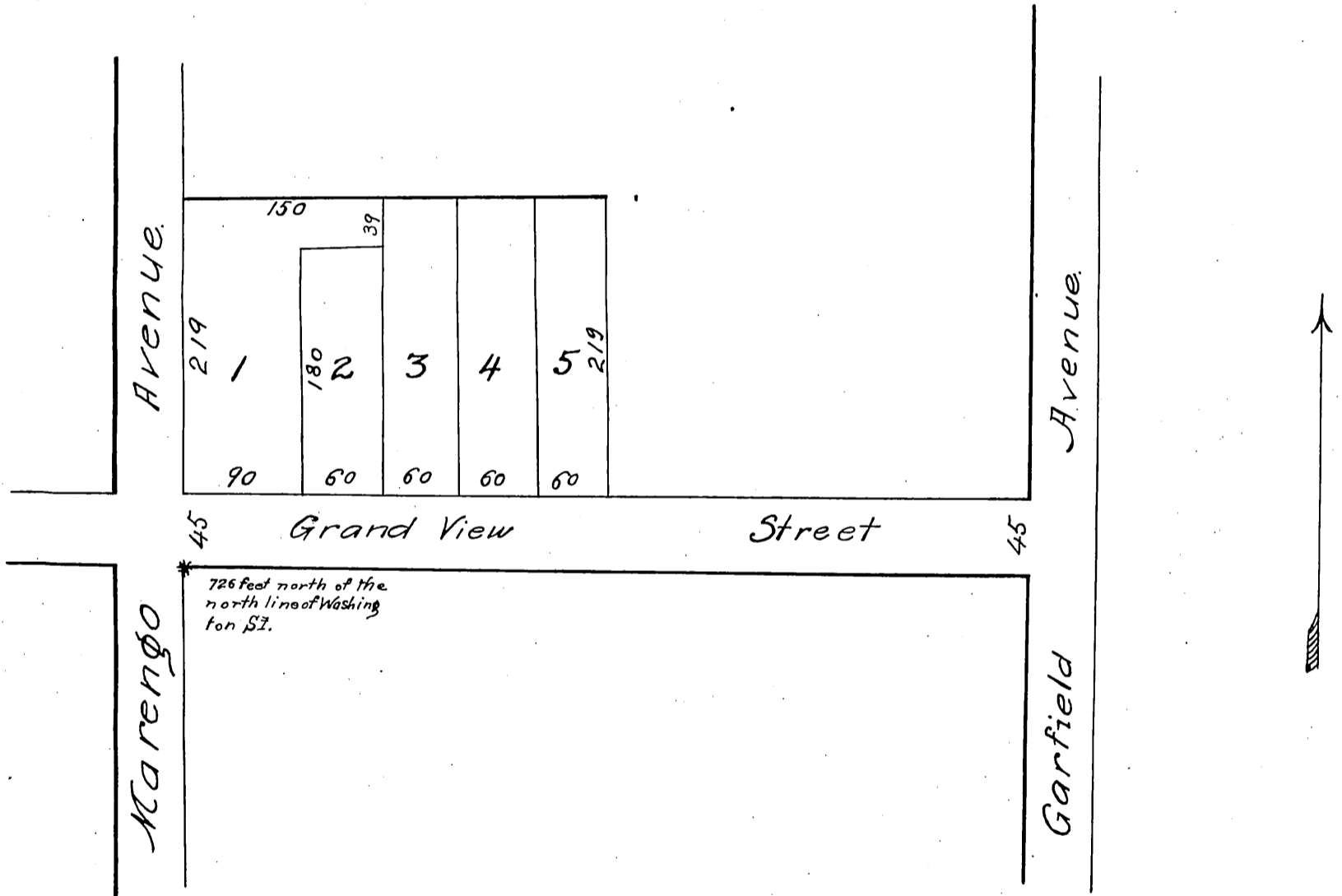
of Lots three (3) and four (4) Block "D" Pasadena
City "Painter & Ball Tract" according to a map
recorded in Book 4, page 557, miscellaneous rec-
ords, Los Angeles County, State of California.

Surveyed March 1887, by J.M. Willard, C.E.

Scale 1/200 inch = 1 ft.

Signed and sealed this 19 day of August, 1887.

A.W. Bunker.



Recorded Aug. 27, 1887.
Request of A.W. Bunker.

Comptroller