



MAP

of

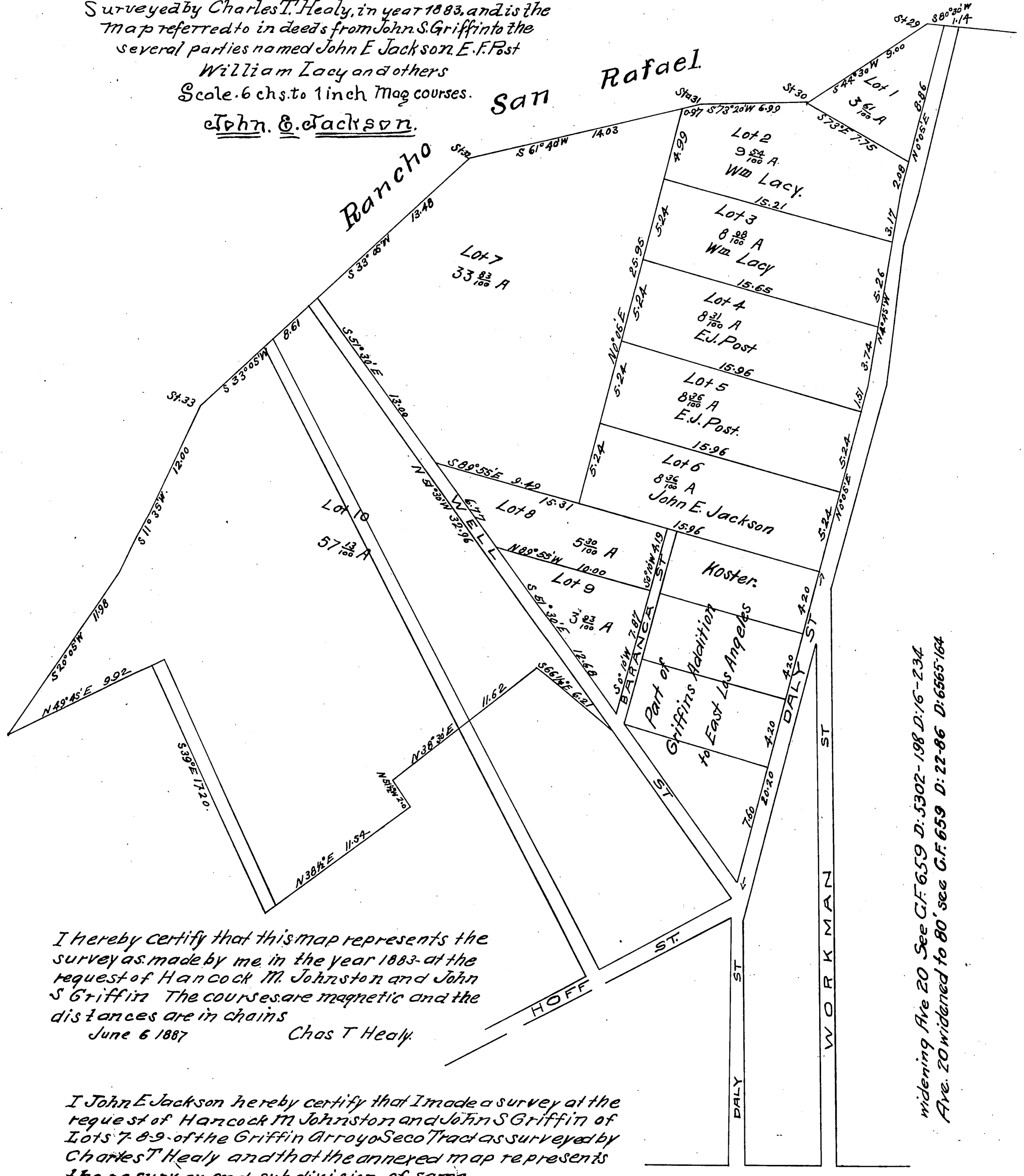
Griffins Arroyo Seco Tract

Griffin's Addition to East Los Angeles

Surveyed by Charles T. Healy, in year 1883, and is the map referred to in deeds from John S. Griffin to the several parties named John E. Jackson, E. F. Post, William Lacy and others

Scale 6 chs. to 1 inch Mag courses.

John E. Jackson.



I hereby certify that this map represents the survey as made by me in the year 1883 at the request of Hancock M. Johnston and John S. Griffin. The courses are magnetic and the distances are in chains.
 June 6 1887 Chas T Healy

I John E. Jackson hereby certify that I made a survey at the request of Hancock M. Johnston and John S. Griffin of Lots 7-9 of the Griffin Arroyo Seco Tract as surveyed by Charles T. Healy and that the annexed map represents the resurvey and subdivision of same.
 May 28 1887 John E. Jackson.

Recorded at request of John S. Griffin
 June 13 1887.

widening Ave 20 See C.F. 659 D: 5302-198 D: 16-234
 Ave. 20 widened to 80' see G.F. 659 D: 22-86 D: 6565-164

Charles T. Healy