

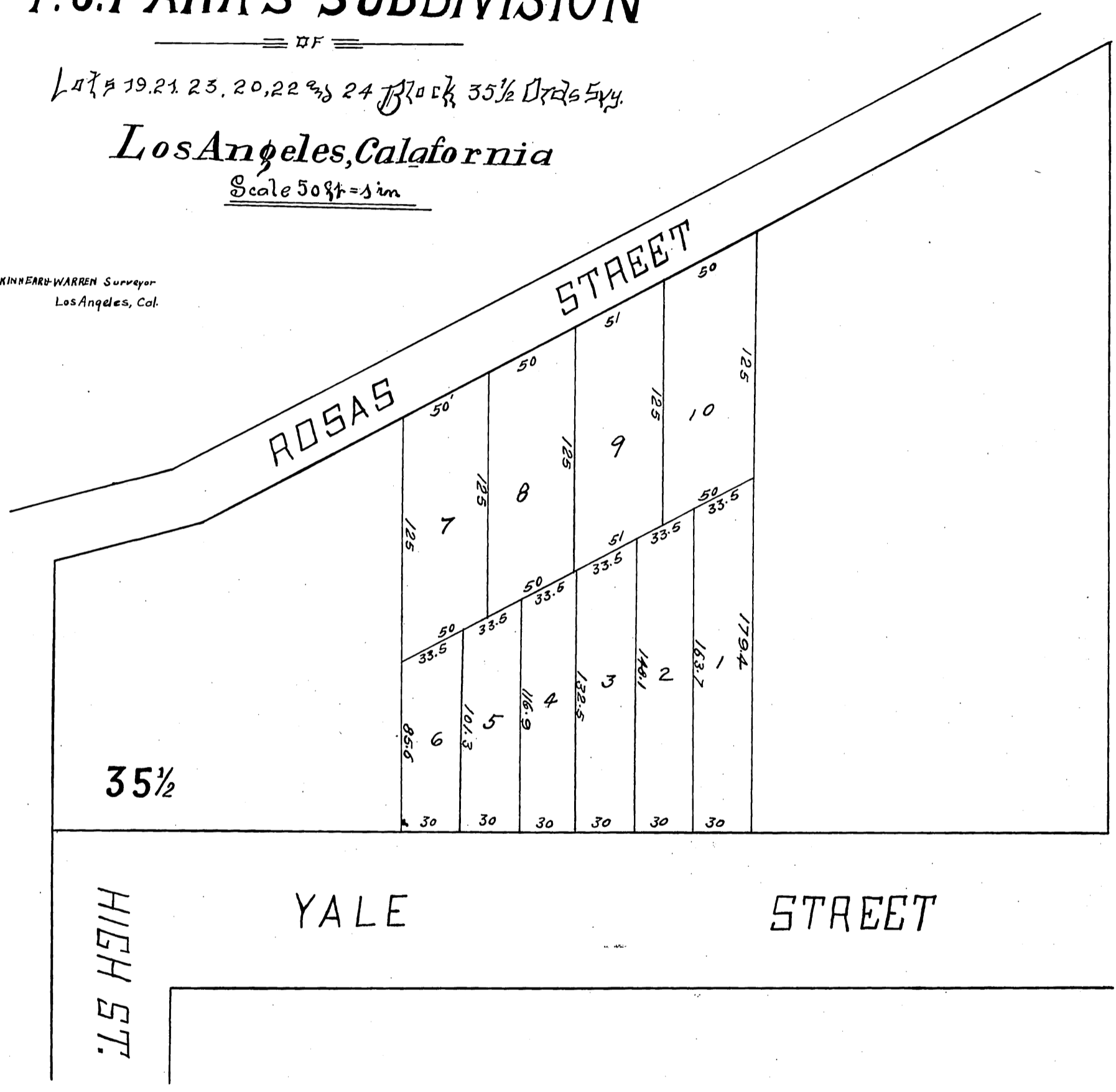


MAP
 of
F. J. FARR'S SUBDIVISION

Lots # 19, 21, 23, 20, 22 and 24 Block 35 1/2 Dicks 5th.

Los Angeles, California
 Scale 50 ft = 1 in

KINNEAR-WARREN Surveyor
 Los Angeles, Cal.



Reduced to a scale of 60' to the inch recorded
 Aug. 29 1887 at 1.45 P.M. at request of F. J. Farr.

*Completed
 W.M.T.*