

Comped
at...

Map of the Central Park Front Tract

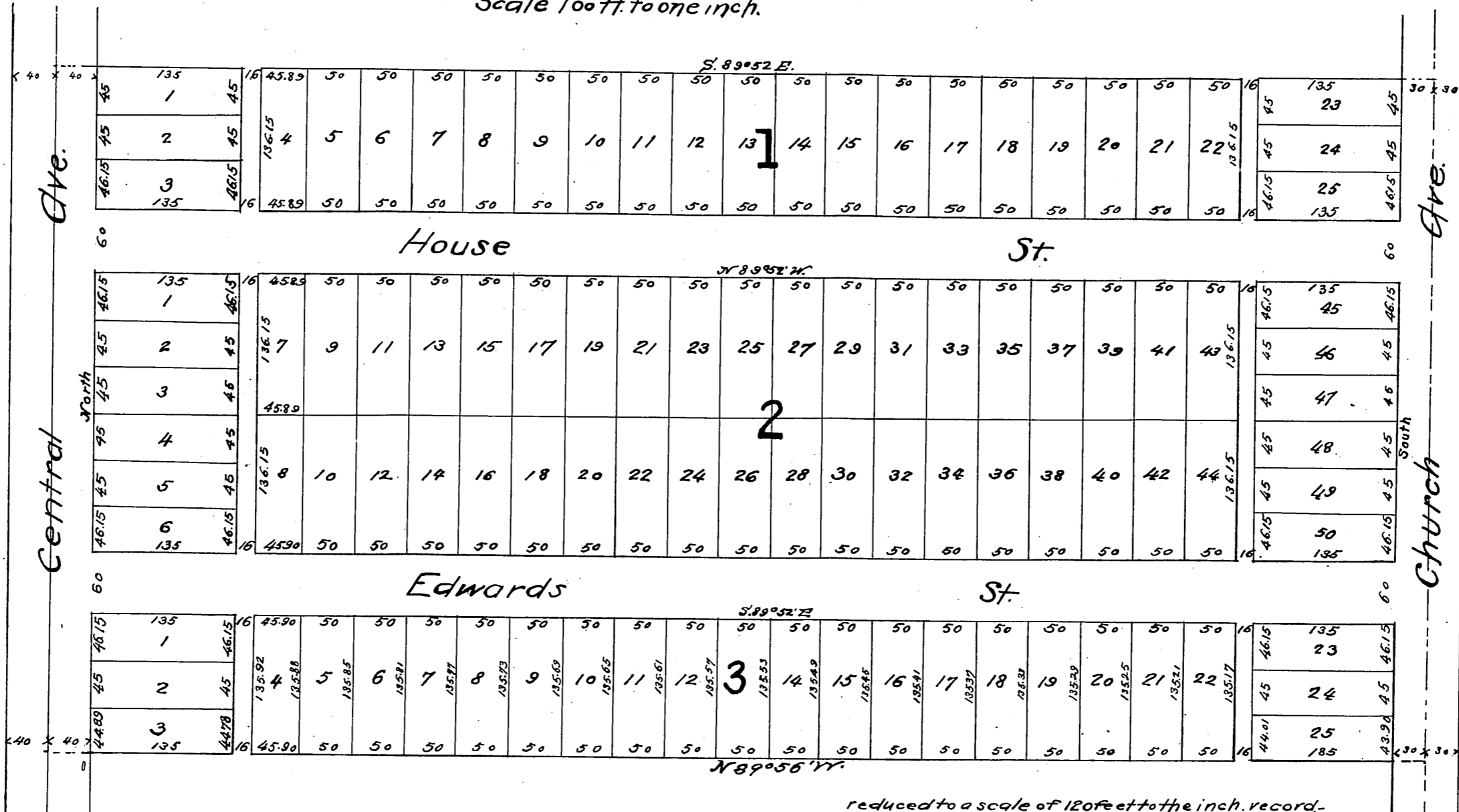
Central Avenue
Being a Subdivision of the N¹/₄ of S.W.¹/₄ of
N.W.¹/₄ Sec. 16, T. 2 S., R. 13 W., S. B. M.

Los Angeles Co., Cal.

Surveyed Aug. 1887

by
E. T. Wright.

Scale 100 ft. to one inch.



reduced to a scale of 120 feet to the inch, recorded
Sept. 3, 1887 at 2.50 P.M. at request of W. S. Hamp-
son.

Vac. of Alley see Ord 13246
Vacation of portion of alley Ord 7355