

Confirmed  
O.M.M.

# SMITH & MALEY

Subdivision of the

## McClay Tract

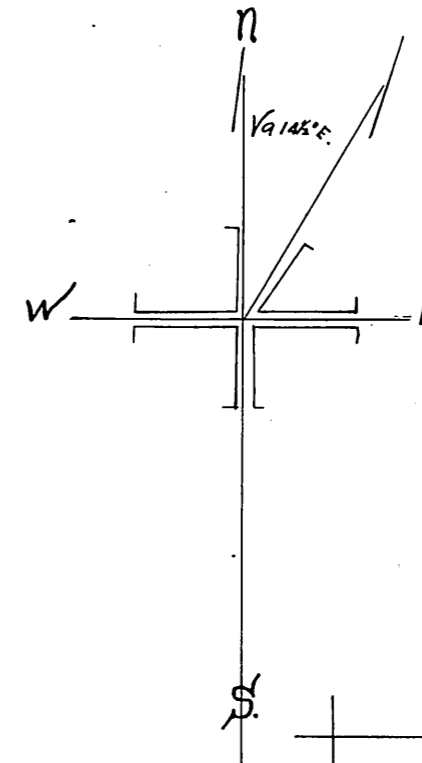
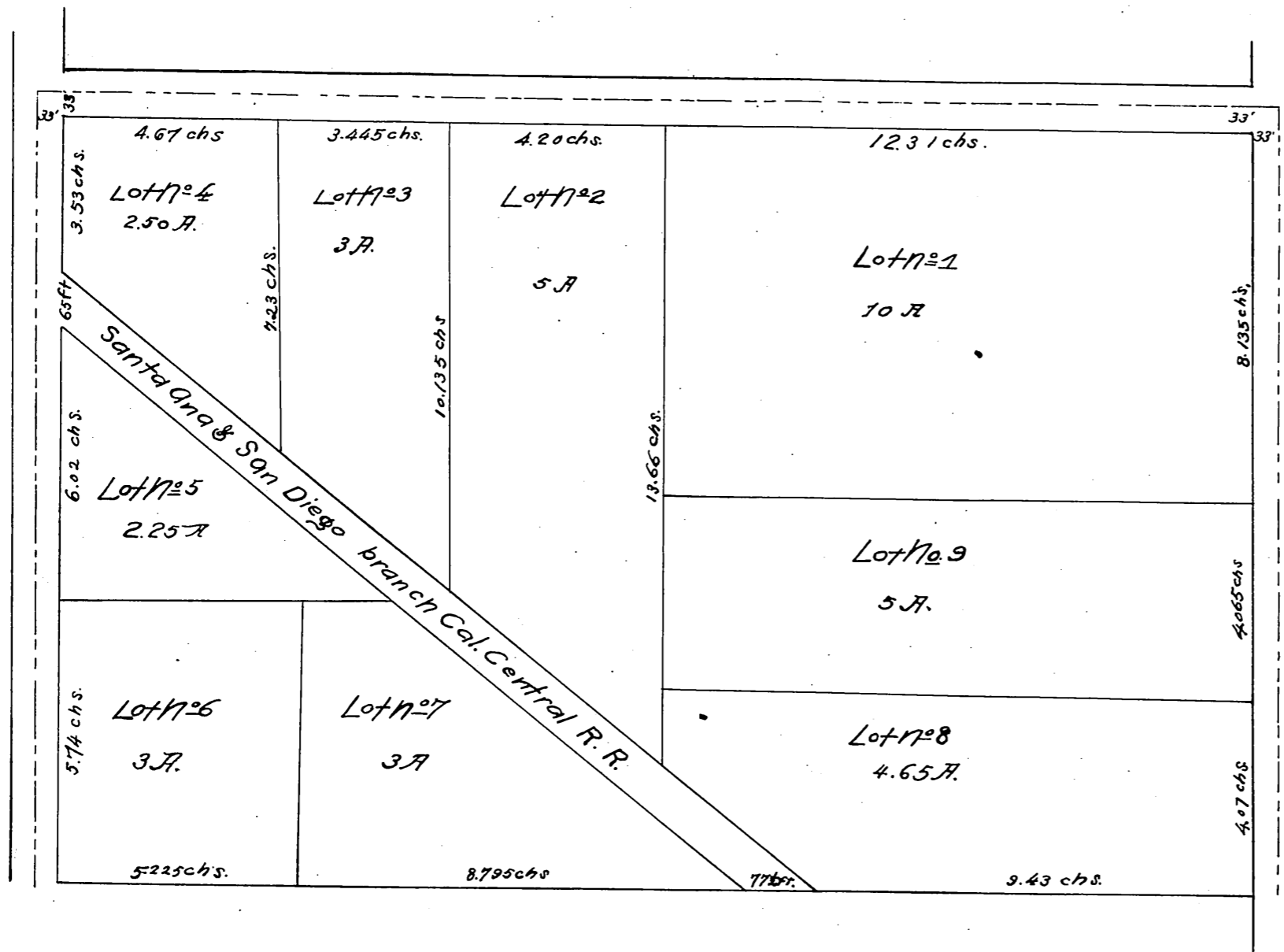
### DESCRIPTION-

Commencing at a point 130 rods south of the common corners of Sections 7, 8, 17, 18 in Township 5 South Range 9 West S.B.M. for the northwest corner of said tract

Surveyed by S.H. Finley  
in

August, 1887.

All measurements to the centre of the streets.



reduced to 3/4 size, recorded Sept. 3, 1887, at 3-4 P.M. at request of First Nat. Bk. Sta. and Frank Q. Gibson, County Recorder

