

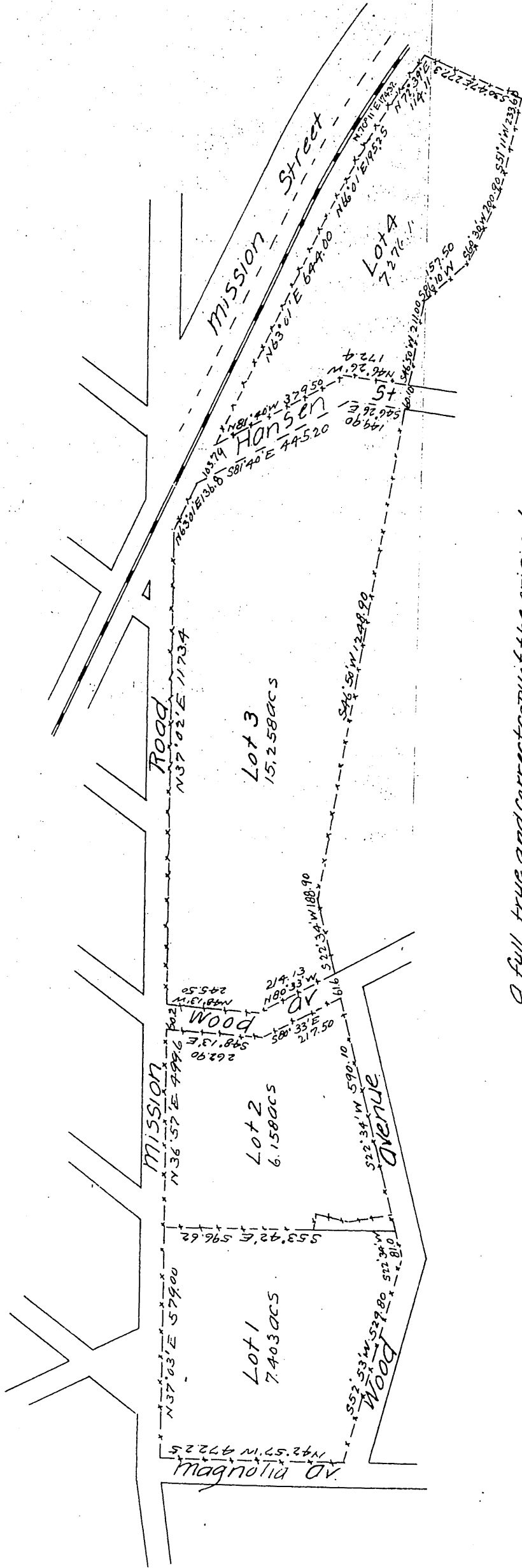
MAP

Showing Subdivision of
County Hospital Grounds
City of Los Angeles

Made at request of the Board of Supervisors by Geo. C. Knox.

Magnetic Courses.

Scale - 150 feet to one inch.



A full, true and correct copy of the original.
 (Reduced to the scale of 300 feet to one inch.)
 Recorded September 6, 1887 at 10:26 A.M. at
 request of County Clerk.
 Frank A. Gibson County Recorder.
 By George Bugbee Deputy.