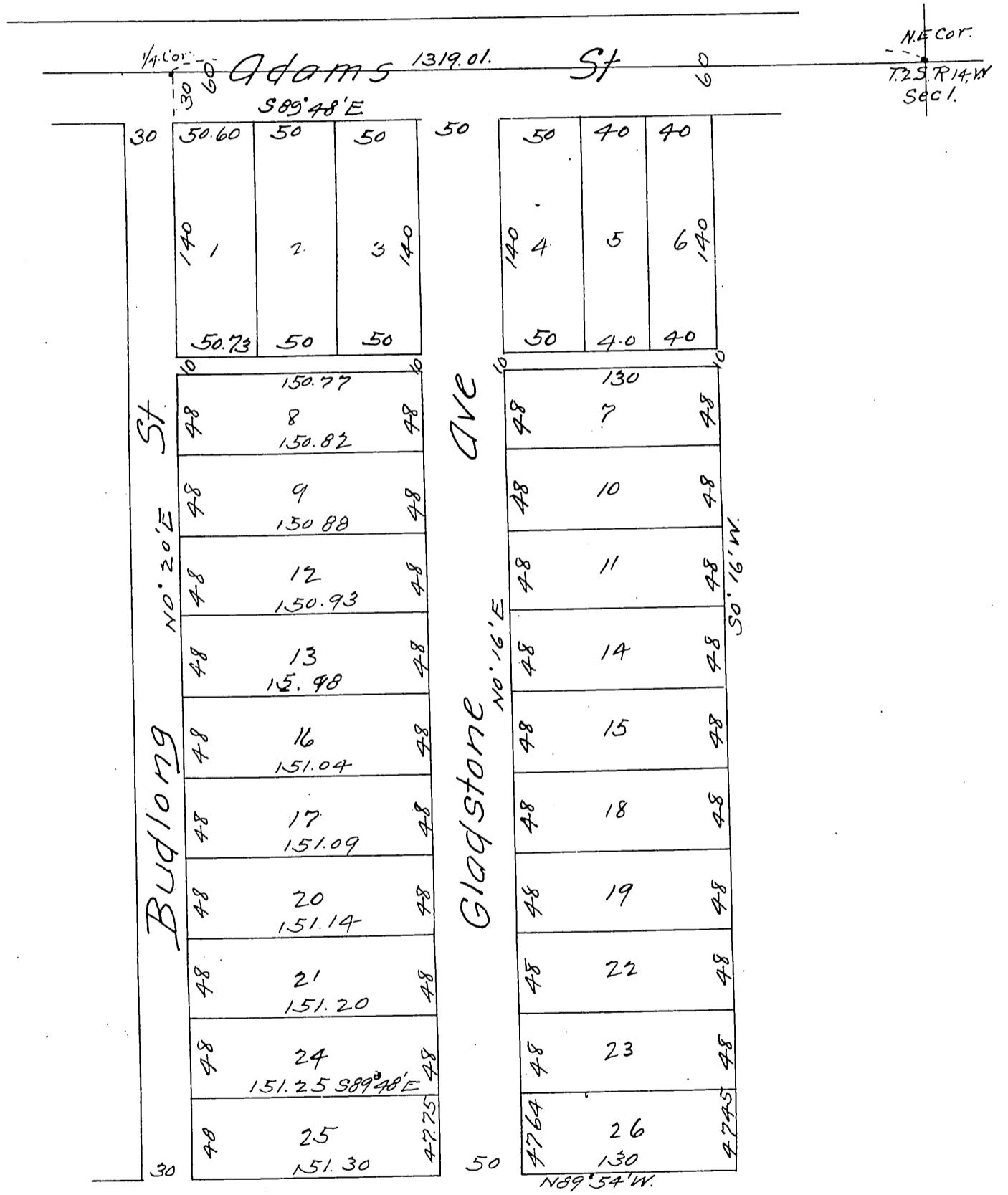




MAP

OF THE
Montgomery Tract
 Being the W¹/₂ of N.W¹/₄ of NE¹/₄ of N.E¹/₄.
 Sec 1. T.2.S. R 14 W S.B.M.
 Los Angeles Co. Cal.
 Surveyed Aug 1887 by E. T. Wright.
 Scale 50 ft to one inch.



A full, true and correct copy of the original.
 (reduced to the scale of 80 feet to one inch)
 Recorded Sept 6, 1887 at 34 min past 10 A. M.
 at request of I. S. Sherman.
 Frank A. Gibson County Recorder.
 By George Bugbee Deputy.