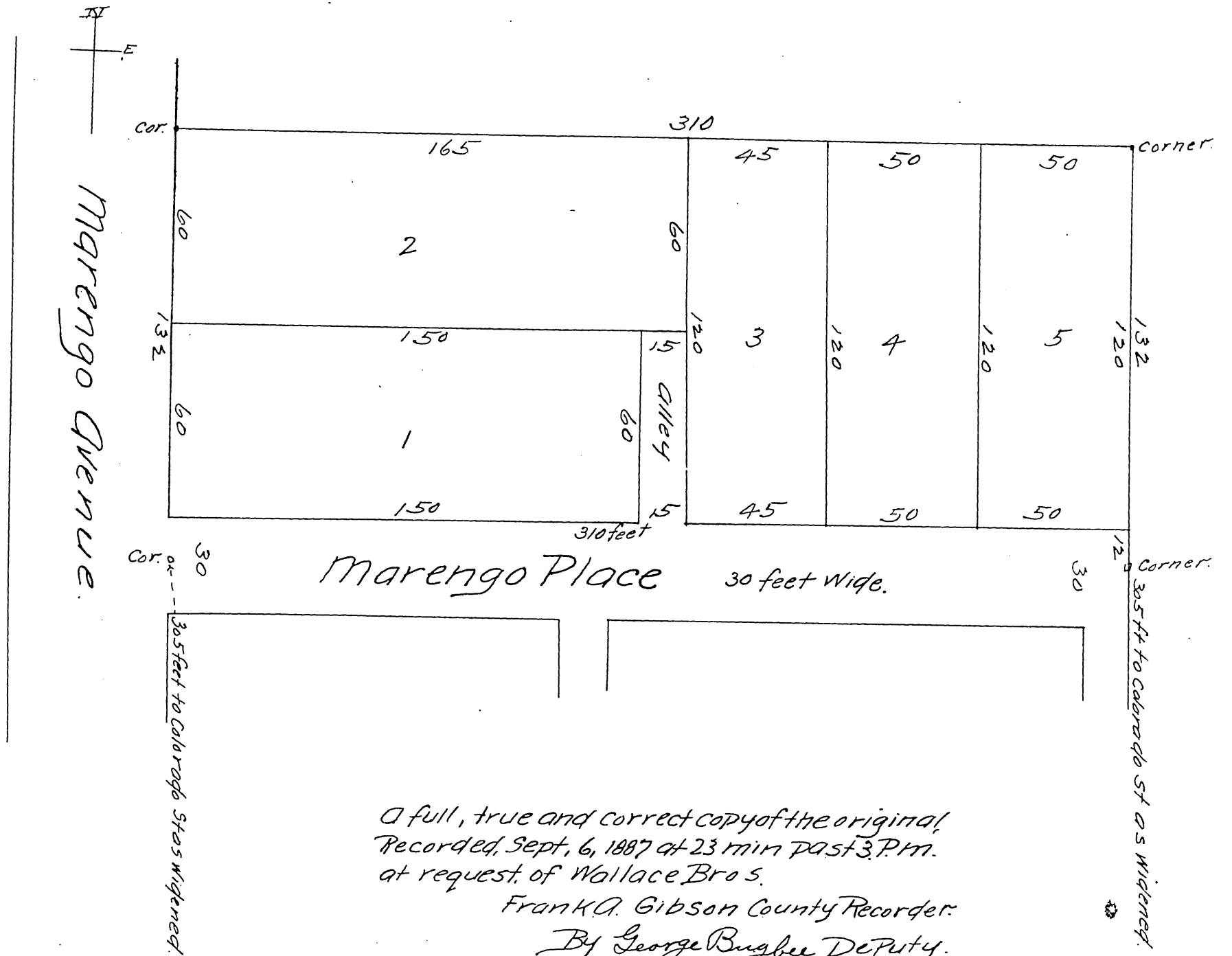


Wallace Brother's
 Subdivision of Lot 1, in the W.T. Vore's Subdivision
 of the South two acres, of the North half
 of Lot 9, Block C, San Pasqual, Tract.
 City of Pasadena, Cal.

January 13th 1887 W^m W. Mills C.E. Surveyor.
 Scale 40 feet = one inch.



A full, true and correct copy of the original,
 Recorded, Sept, 6, 1887 at 23 min past 3 P.M.
 at request of Wallace Bros.
 Frank A. Gibson County Recorder.
 By George Bugbee Deputy.