

MAP

OF THE

Dena Vista Tract

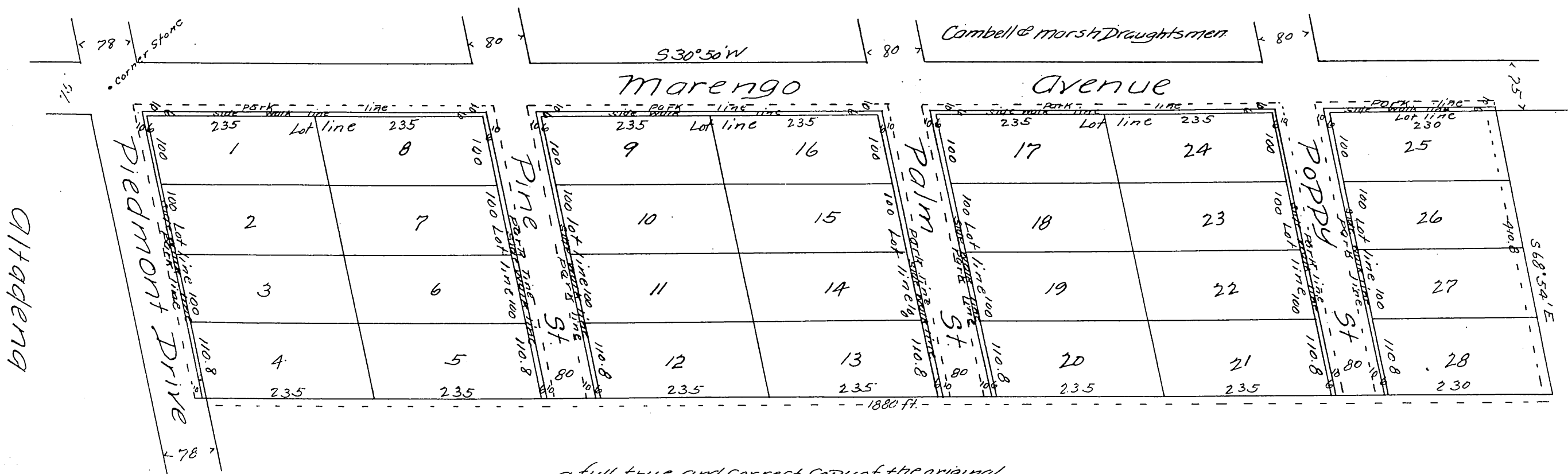
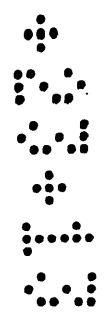
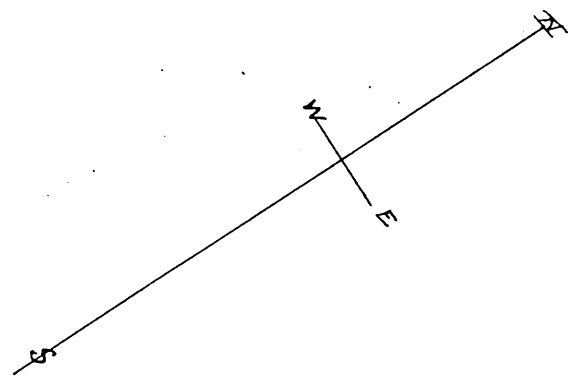
Being De Los Arnolds Subdivision of

Lot 1 of Jewetts Subdivision of lands

¹⁷
Rancho San Pasqual

Surveyed 1887 by Baldwin Jessup & Co.

Scale 100ft to 1 inch.



a full, true and correct copy of the original.

Recorded September 10, 1887 at 10:40 AM at
request of De Los Arnold.

(Reduced to scale of .50 feet to one inch.)

FRANK A GIBSON County Recorder.

By George Rughie Deputy.