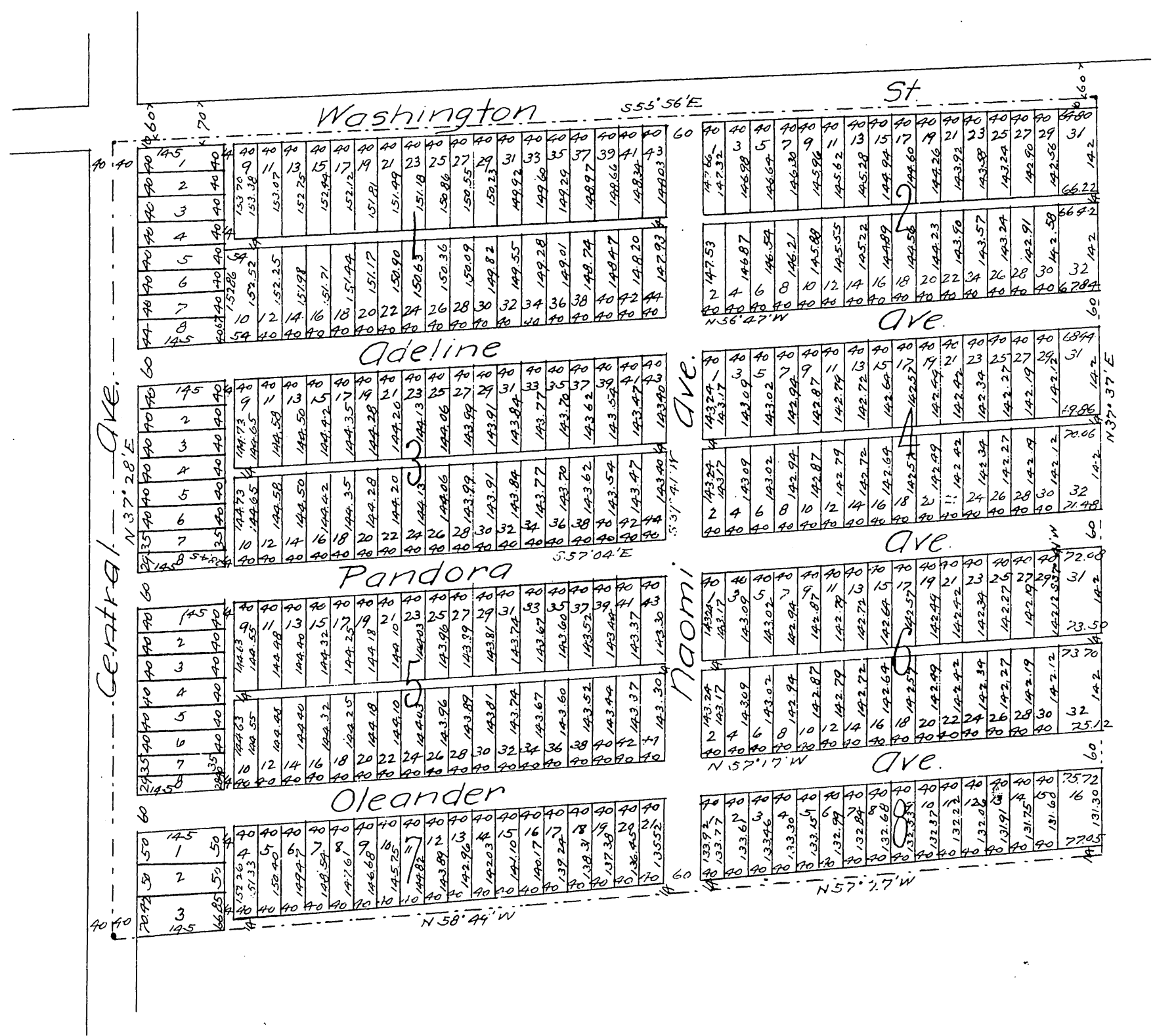


# MAP OF THE George Dalton Sr Tract. Los Angeles City, Cal.

Surveyed in Aug 1887 by E. T. Wright.  
Scale 100 ft. to one inch.



A full, true and correct copy of the original.  
(reduced to the scale of 200 feet to one inch)  
recorded Sept. 10, 1887 at 7 min past 3 P. M.  
at request of C. V. Hall.  
Frank A. Gibson County Recorder.  
By George B. Buebe Deputy.