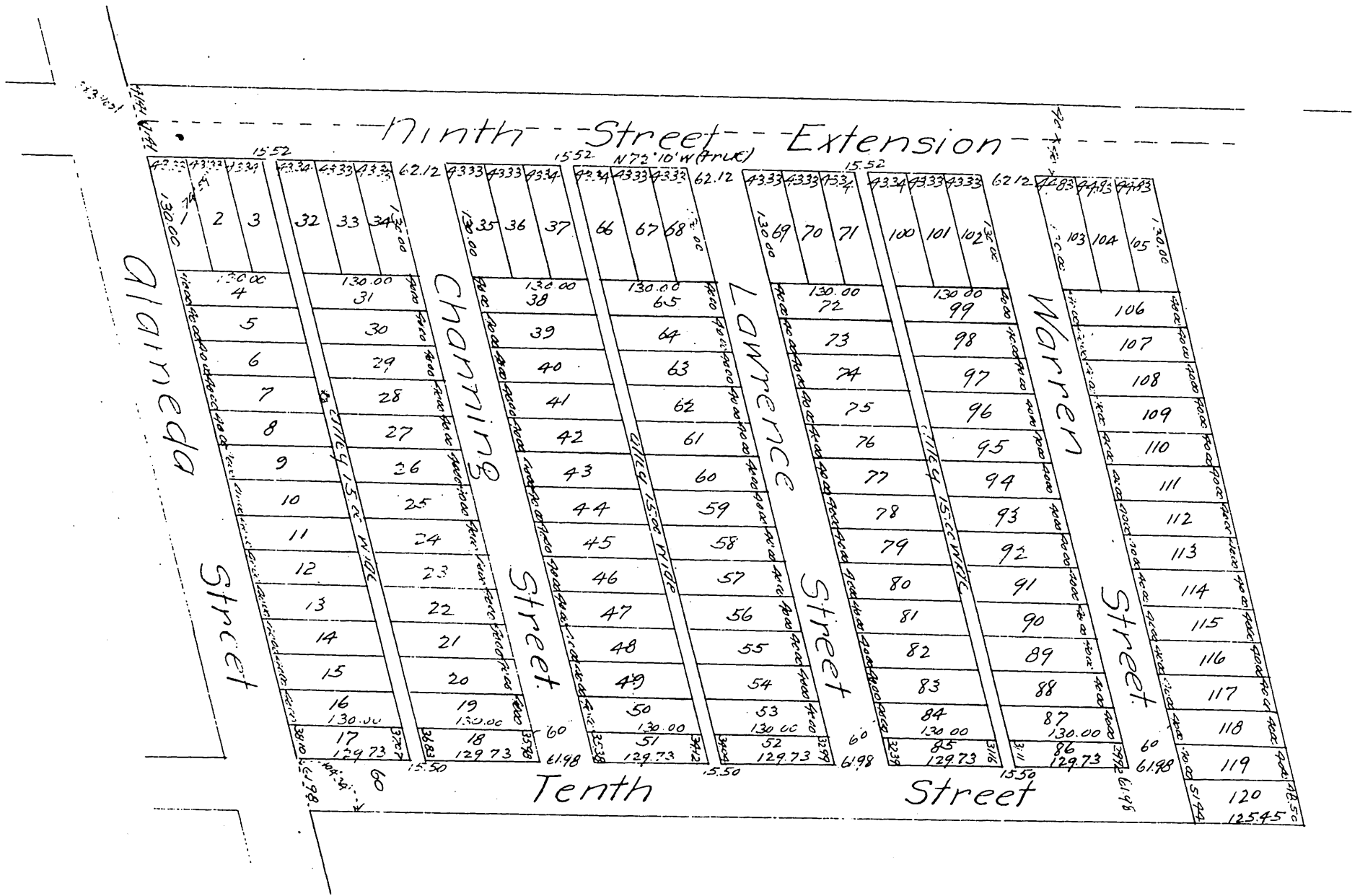


MAP OF THE Weiss Tract in the City of Los Angeles, Cal.

Surveyed at the request of A. Weiss Esq
in Aug 1887 by King & Winston.

Scale 100 ft to one inch.



A full, true and correct copy of the original
(reduced to the scale of 150 feet to one inch)
recorded Sept 14, 1887 at 46 min past 11 a.m.
at request of W R Matthews.

Frank A Gibson County Recorder.
By George DeLong-Dee Deputy.