

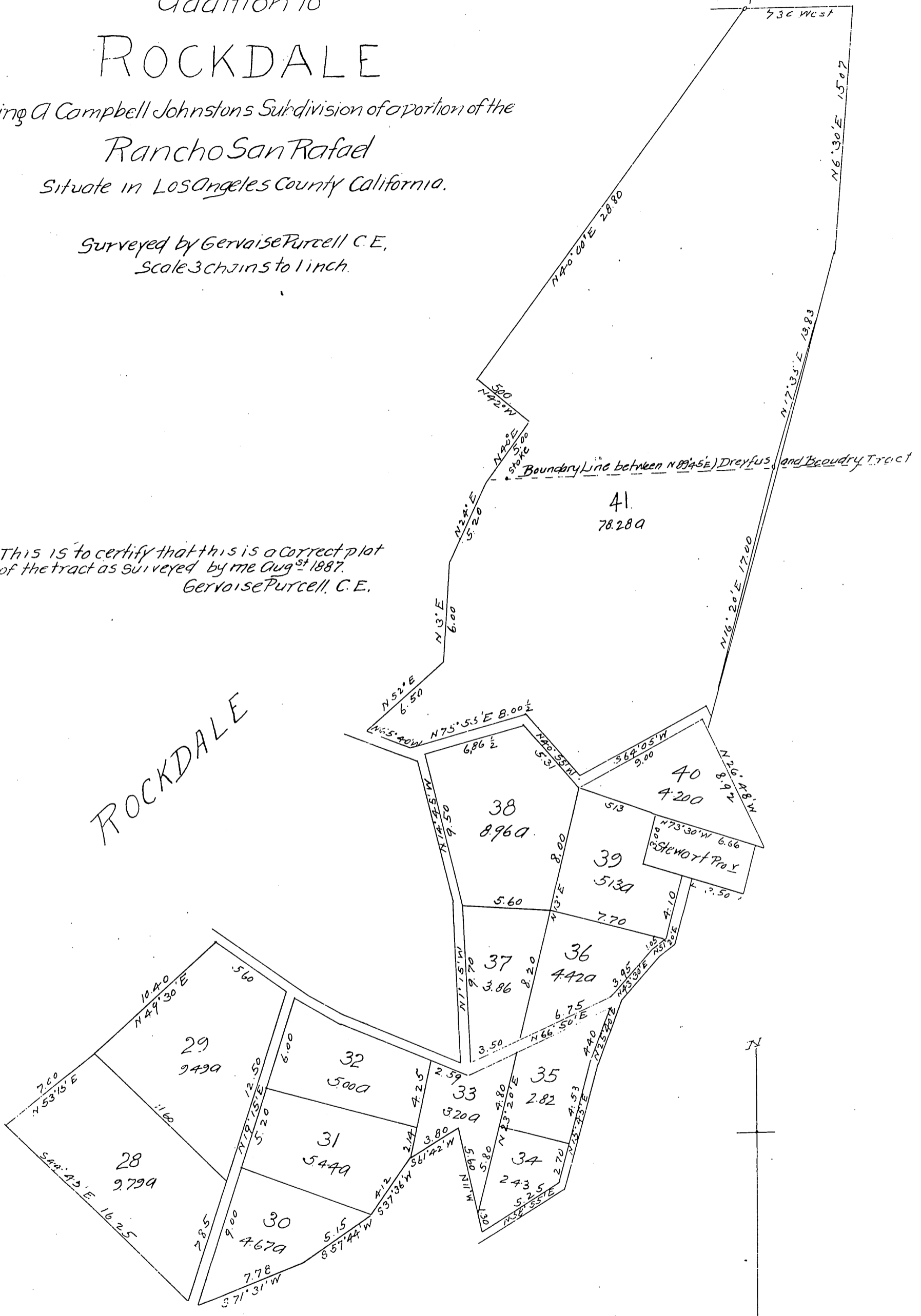
# Addition to ROCKDALE

Being a Campbell Johnstons Subdivision of a portion of the  
Rancho San Rafael  
situate in Los Angeles County California.

Surveyed by Gervaise Purcell C.E.  
Scale 3 chains to 1 inch.

This is to certify that this is a correct plot  
of the tract as surveyed by me Aug<sup>st</sup> 1887.  
Gervaise Purcell, C.E.

ROCKDALE



A full true and correct copy of the original  
(Reduced to the scale of 6 chains to one inch.)  
Recorded Sept 16 1887 at 4.6 min Past 3. P.M.  
at request of A. Campbell Johnston.

Frank A Gibson, County Recorder,  
By Geo Dugan, Deputy.