

MAP of the KENWOOD PARK TRACT.

Being a part of the S 1/2 of the SE 1/4 of the SE 1/4 of Sec 36, T. 15. R. 14. W. S.B.M.

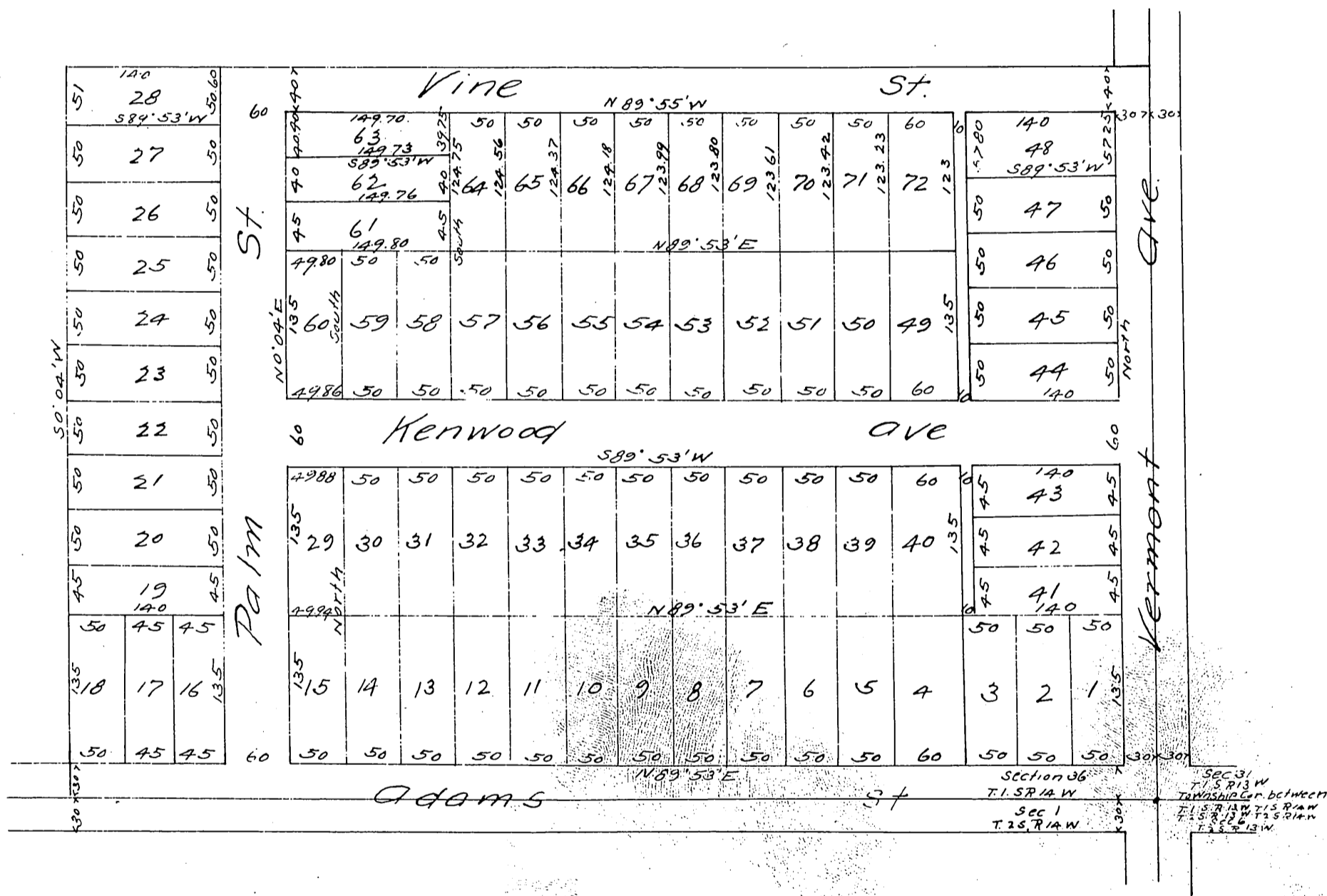
Los Angeles Co. Cal.

Subdivided for Barton, Bailey & Friesner

By Whitten and Rawson.

Sept 1885

Scale 80 ft to one inch.



A full true and correct copy of the original (reduced to 120 feet to one inch) recorded Sept 17, 1887 at 4:35 P.M. at request of G. K. Barton.

Frank A. Gibson County Recorder
By George Bugbee Deputy.