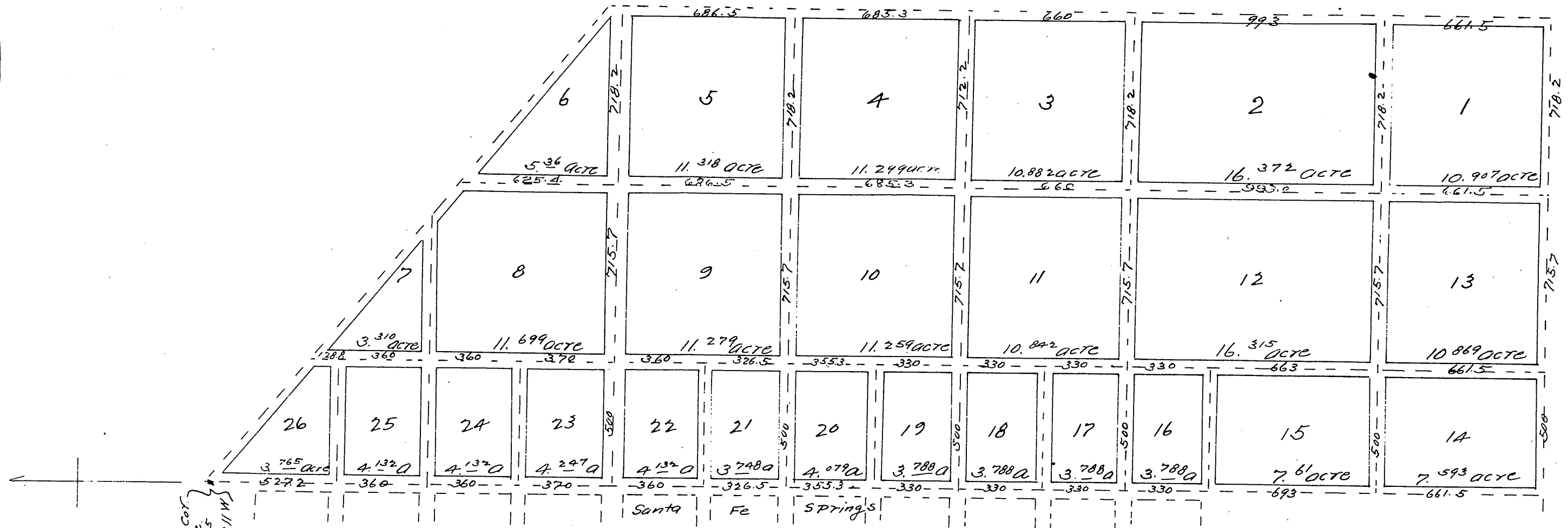


MAP
of Townsite of
Bannister's Addition
to
Santa Fe Springs.
Los Angeles County Cal.

Surveyed by J. P. F. Kuhlman, C.E.

Scale 300ft to 1 inch.



1/4 Sec. Cor.
on N. Line
of Sec. 5
T. 3. S. R. 11 W.

A full, true and correct copy of the original (reduced to 400 feet to one inch) recorded September 20th 1887 at 10.18 a.m. at request of Byram and Poindexter

Frank O. Gipson Co Recorder.
By George Bingham Deputy.

