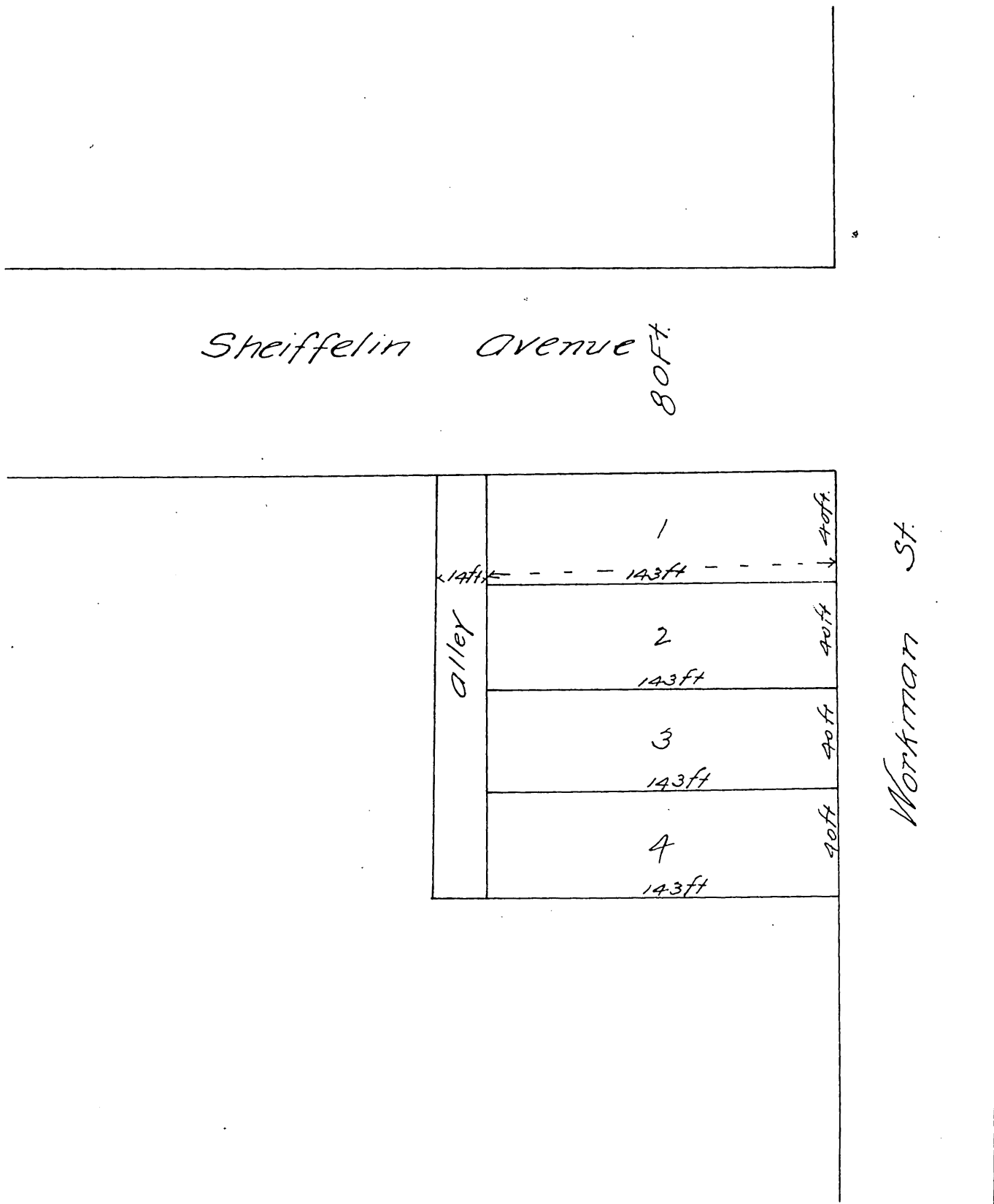


Gregorys Subdivision
 OF
 Lots 15, 16, 17, 18 of Lowell's Subdivision.
 OF THE
 Scheffelin Tract.
 EAST LOS ANGELES



A full true and correct copy of the original recorded Sept 21, 1887
 at 11²⁴ O. M. at request of C. W. Gregory.

Frank O. Gibson County Recorder.
 By George Beale Deputy.