



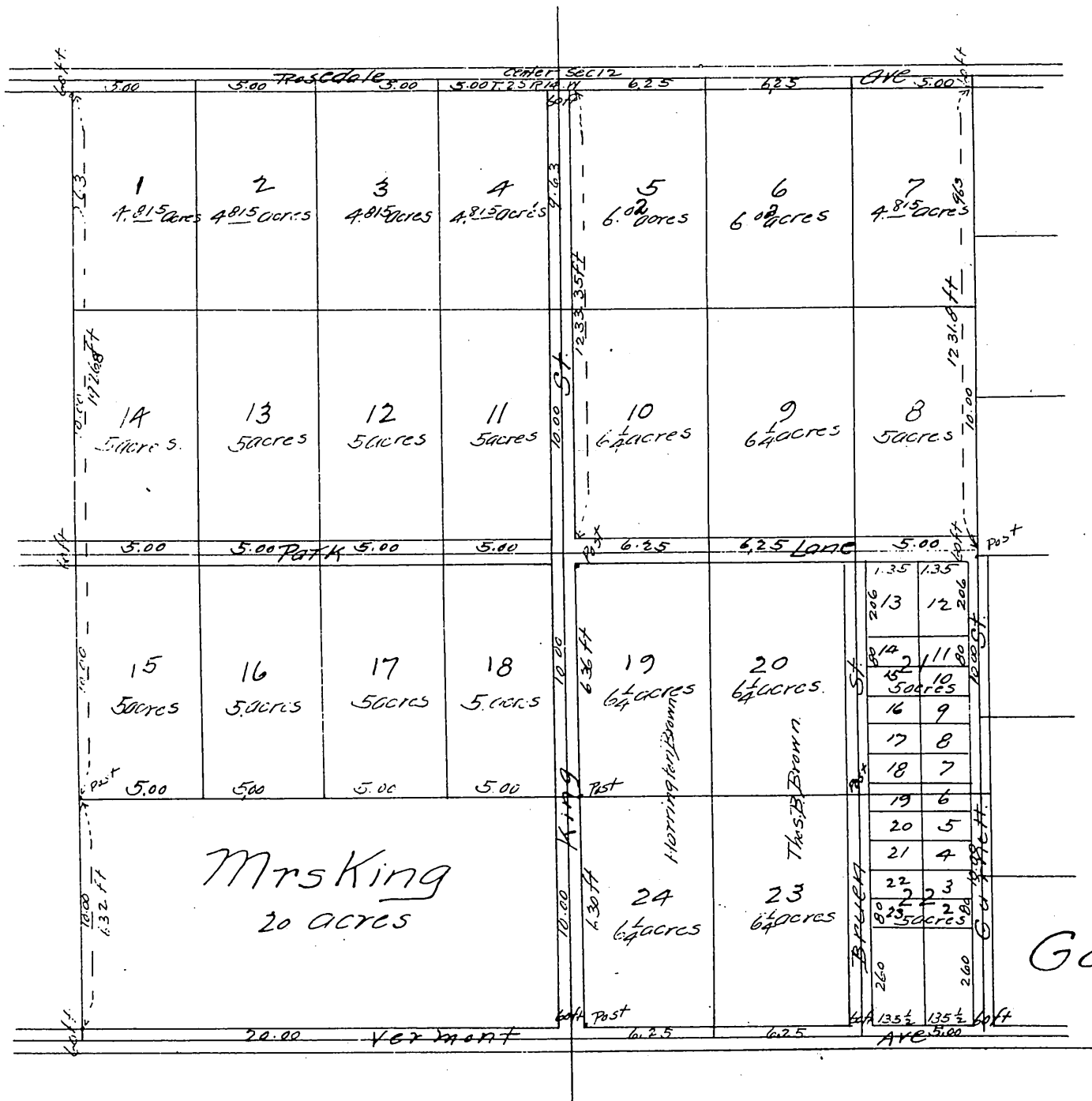
WEST PARK VILLA TRACT

Los Angeles County Cal.

Surveyed at request of Harrington Brown by Albert G. Burton March 1884

Also Subdivision of Lots 21 & 22 Surveyed Sept 1887

Scale 2 chains to one inch.



A full true and correct copy of the original (reduced to the scale of 6 chains to one inch recorded September 21st 1887 at 54 min. Past 12 m. at request of Harrington Brown

Frank A. Gibson County Recorder.
By George Buckley Deputy.